

AGENDA

Meeting: Royal Wootton Bassett and Cricklade Area Board
Place: Memorial Hall, Royal Wootton Bassett, Station Road, SN4 8EN
Date: Wednesday 26 July 2017
Time: 6.00 pm

Including the Parishes of Braydon, Broad Town, Clyffe Pypard, Cricklade, Latton, Lydiard Millicent, Lydiard Tregoz, Lyneham & Bradenstoke, Marston Meysey, Purton, Tockenham and Royal Wootton Bassett.

The Area Board welcomes and invites contributions from members of the public. The chairman will try to ensure that everyone who wishes to speak will have the opportunity to do so.

If you have any requirements that would make your attendance at the meeting easier, please contact your Democratic Services Officer.

Refreshments and networking opportunity from 6:00pm

Please direct any enquiries on this Agenda to Kevin Fielding (Democratic Services Officer), direct line 01249 706612 or email kevin.fielding@wiltshire.gov.uk

All the papers connected with this meeting are available on the Council's website at www.wiltshire.gov.uk

Press enquiries to Communications on direct lines (01225) 713114 / 713115.

Wiltshire Councillors

Cllr Allison Bucknell - Lyneham
Cllr Mollie Groom - Royal Wootton Bassett East
Cllr Mary Champion - Royal Wootton Bassett North
Cllr Chris Hurst - Royal Wootton Bassett South
Cllr Bob Jones MBE - Cricklade and Latton
Cllr Jacqui Lay - Purton

RECORDING AND BROADCASTING NOTIFICATION

Wiltshire Council may record this meeting for live and/or subsequent broadcast on the Council's website at <http://www.wiltshire.public-i.tv>. At the start of the meeting, the Chairman will confirm if all or part of the meeting is being recorded. The images and sound recordings may also be used for training purposes within the Council.

By entering the meeting room you are consenting to being recorded and to the use of those images and recordings for broadcasting and/or training purposes.

The meeting may also be recorded by the press or members of the public.

Any person or organisation choosing to film, record or broadcast any meeting of the Council, its Cabinet or committees is responsible for any claims or other liability resulting from them so doing and by choosing to film, record or broadcast proceedings they accept that they are required to indemnify the Council, its members and officers in relation to any such claims or liabilities.

Details of the Council's Guidance on the Recording and Webcasting of Meetings is available on request.

Items to be considered	Time
<p>1 Networking Session</p> <p>Dorset and Wiltshire Fire & Rescue Service - "Test your Smoke Alarm" representatives will be promoting Free Safe & Well visits.</p> <p>Learndirect - will provide information about their new Preparing to Work in the Digital World learning courses in RWB.</p>	6:00pm
<p>2 Chairman's Welcome and Introductions</p>	7:00pm
<p>3 Apologies for Absence</p>	
<p>4 Minutes (Pages 1 - 2)</p> <p>To approve the minutes of the meeting held on Monday 16 May 2017.</p>	
<p>5 Declarations of Interest</p> <p>To receive any declarations of disclosable interests or dispensations granted by the Standards Committee.</p>	
<p>6 Wiltshire - The Wider Picture (Pages 3 - 6)</p> <p>News and information on what's going on in your local community and across the county:</p> <ul style="list-style-type: none"> • Bobby Van Trust – Free online safety support. • Draft Housing Site Allocations Consultation. 	
<p>7 Strengthening our Communities (Pages 7 - 20)</p> <p>Grant Funding</p> <p>General Capital grants:</p> <ul style="list-style-type: none"> • 2017-18 allocation - £46,556 • Invested to date - £8,340.43 • Available for investment - £38,215.57 • Amount leveraged – TBC 	

Community Area Transport Group:

- 2017-18 allocation - £22,728
- Invested to date - £8,293
- Available for investment - £14,435
- Amount leveraged - TBC

Youth Grants:

- 2017-18 allocation - £21,235
- Invested to date - £15,000
- Available for investment - £6,235
- Amount leveraged - £3,000

Health & Wellbeing/Older Person Champion:

- 2017-18 allocation - £7,700
- Invested to date - £ 7,700
- Available for investment - Budget committed to appointment of Health & Wellbeing/Older Person's Champion, Ellen Blacker
- Amount leveraged – To be reported end of financial year

Community Youth Funding

Health and Wellbeing Champion – update

Wiltshire Wildlife Trust – Jessica Thimbleby will talk about Recycle for Wiltshire, a project to educate and encourage school children and communities throughout Wiltshire to reduce, reuse and recycle more of their household rubbish.

Meet your team

Julian Kirby From Age UK Wiltshire will provide information about the Age UK service and answer any questions.

Update on the RWB Community Hub and Library.

Update from Alexa Davies - Community Engagement Manager

- The RWB&C Community Asset List.
- The new RWB&C Area Board community newsletter.

8 **Spotlight on Parishes and Partners** (*Pages 21 - 34*)

To receive updates from our key partners, including:

- Wiltshire Police
- Dorset and Wiltshire Fire & Rescue Service
- Military Civilian Integration Partnership
- Defence Technical Training
- NHS Wiltshire
- Healthwatch Wiltshire
- Parish and Town Councils

9 **Task Group Reports and Decisions** (*Pages 35 - 72*)

To consider reports from the following task groups and make any necessary decisions:

- Community Area Transport Group (CAT-G)
- Notification of the modification of the North East Wiltshire Villages (NEW-V) Neighbourhood Area and the designation of the three neighbourhood areas for Tockenham Parish, Clyffe Pypard Parish and Broad Town Parish.

10 **Wrap Up**

8:00pm

MINUTES

Meeting: ROYAL WOOTTON BASSETT AND CRICKLADE AREA BOARD
Place: Council Chamber - County Hall, Trowbridge BA14 8JN
Date: 16 May 2017
Start Time: 1.00 pm
Finish Time: 1.10 pm

Please direct any enquiries on these minutes to:

Kevin Fielding, direct line 01249 706612 or e-mail kevin.fielding@wiltshire.gov.uk

Papers available on the Wiltshire Council website at www.wiltshire.gov.uk

In Attendance:

Wiltshire Councillors

Cllr Allison Bucknell, Cllr Mary Champion, Cllr Mollie Groom, Cllr Chris Hurst,
Cllr Bob Jones MBE and Cllr Jacqui Lay

Wiltshire Council Officers

Kevin Fielding – Democratic Services officer

<u>Agenda Item No.</u>	<u>Summary of Issues Discussed and Decision</u>
1	<u>Apologies</u> There were no apologies.
2	<u>Election of the Chairman</u> Cllr Allison Bucknell was elected Chairman of the Royal Wootton Bassett and Cricklade Area Board 2017/18.
3	<u>Election of the Vice-Chairman</u> Cllr Jacqui Lay was elected Vice-Chairman of the Royal Wootton Bassett and Cricklade Area Board 2017/18.
4	<u>Close</u>

Chairman's Announcements

Subject:	Online Safety- Free support from Bobby Van Trust
Contact Details:	bv.onlinesafety@wiltshire.police.uk / 01380 861191

**The Wiltshire
Bobby Van Trust**



The Wiltshire Bobby Van Trust has launched its Online Safety Initiative. This will be the first scheme of its kind in the country.

If you are over 60, or Over 18 and registered disabled, and have concerns over your online safety you will be able to apply for a visit from an Online Safety Advisor. The Advisors have been interviewed following Police procedures and will be supporting The Wiltshire Bobby Van Trust to rollout this important new initiative. All Advisors are volunteers and they aim to cover the whole of Wiltshire and Swindon.

Referrals can be made via self-referral either by email bv.onlinesafety@wiltshire.police.uk or by calling 01380 861191. Alternatively via Wiltshire Police (101) and other supporting agencies.

The aim of the Online Safety Advisor will be to visit the client's home to offer a tailored service to:

- Improve digital/cyber security awareness and help the client to identify potential risks
- Offer cyber & scam prevention advice.
- Signpost to future advice & available resources.
- Provide support & reassurance.
- If an offence is identified reporting signpost the client to 101 for Police investigation
- Offer basic practical skills to ensure clients can check & understand privacy settings.
- Provide talks & presentations to community groups

Education is the key to its success.

Jennie Shaw Director of the WBVT, "Online crime is the fastest growing crime in our County and as always it the elderly and vulnerable that seem to be the most targeted."

"At the Bobby Van Trust we recognize the fear of crime and loneliness within our client base continues to increase, as life expectancy has risen and people increasingly live alone or far from their families. A recent study showed that a fifth of older Britain's felt lonely all the time. This isolation is having a serious effect on both mental and physical health. The computer is a tool to help prevent loneliness it enables people to keep in touch with family and friends or groups and interests".

Chairman's Announcements

As with our home security service we will work closely with Wiltshire Police to maintain an awareness of current threats and to ensure our advice is current with ever changing trends.

The Wiltshire Bobby Van Trust is a scheme which has been operating in Swindon and Wiltshire for nearly 20 years it provides a free home security service for older, vulnerable and disabled people.



Formal Consultation on the Pre-Submission Wiltshire Housing Site Allocations Plan

Friday 14 July to Friday 22 September 2017

The Draft Plan will identify, where necessary, new allocations for housing at settlements and review settlement boundaries.

The draft Plan can be viewed from Friday 14 July at the council's main offices at Monkton Park (Chippenham), Bourne Hill (Salisbury) and County Hall (Trowbridge) and in all Wiltshire Council libraries during normal opening hours or can be available to view on the council's website at <http://www.wiltshire.gov.uk/wiltshsgsiteallocationsplan>

There will be four public exhibitions where you can find out more about the consultation.

These will be held between **12pm** and **7pm** at:

17 July: The Neeld Hall (Neeld Community and Art Centre) in Chippenham

19 July: Guildhall, Salisbury

24 July: Devizes Town Hall

26 July: County Hall Trowbridge

**Please return comments to Wiltshire Council, by 5pm on Friday 22 September 2017
via the following ways:**

Online: <http://www.wiltshire.gov.uk/wiltshsgsiteallocationsplan>

By post to: Spatial Planning, Economic Development and Planning, Wiltshire Council, County Hall,
Bythesea Road, Trowbridge, Wiltshire, BA14 8JN.

By e-mail to: spatialplanningpolicy@wiltshire.gov.uk

Chairman's Announcement

Royal Wootton Bassett Community Hub – update

I am pleased to update that the proposal to redevelop Royal Wootton-Bassett Library to deliver a Community Hub, as a partnership project between Wiltshire Council and Royal Wootton Bassett Town Council has been given the go ahead.

The new hub will provide a modern and dynamic multipurpose space that can be utilised by the whole community.

The investment will deliver the following improvements:

- A new frontage and entrance
- A large meeting room that can accommodate town council and community meetings.
- Audio and visual equipment for meetings
- Flexible shelving throughout the library to enable a large meeting space offer that can accommodate 120+
- Improved catering and toilet facilities
- Redecoration throughout the building
- Plus – the investment of an Open+ system - that allows secure access to the building outside of the standard library operating hours. This system is safe and easy to use and is already successfully in operation in the recently opened Calne Community Hub. It provides the opportunity to increase operating hours without the need to increase staffing and enables community access to the facility for its use. In Calne, this system has resulted in a 37.5% increase in the opening hours and access to the library.

We expect to see an increase in user and visitor numbers in the new hub and the refurbishment of the library will make it a more modern accessible space and will provide multi-purpose meeting and activity spaces.

Bringing the community together in a central community hub will have far reaching benefits for the community of Royal Wotton Bassett. The hub in Calne has evidenced that the provision of such space has had a huge impact of the number of groups meeting and getting involved and, as such, the number of volunteers has escalated enabling the library and other services to be more accessible and available for longer and more sustainable in the future.

The design plans are now being finalised and work is due to start on site in September with the new hub opening pre-Christmas. We will keep you updated as the hub works are progressed through Community Matters and area board meetings.



Royal Wootton Bassett and Cricklade Investing in our Communities Newsletter JULY 2017

- Please note, all figures are subject to confirmation with our Finance team and as such must be treated as provisional.

	2017-18 allocation	Invested to date	Available for investment	Amount leveraged
GENERAL CAPITAL GRANTS	46,556	8,340.43	38,215.57	Tbc
COMMUNITY AREA TRANSPORT GROUP (CATG)	22,728	8,293	14,435	Tbc
YOUTH GRANTS	21,235	15,000	6,235	3,000.00
HEALTH & WELLBEING / OLDER PERSON CHAMPION	7,700	7,700	Budget committed to appointment of Health & Wellbeing/Older Person's Champion, Ellen Blacker	To be reported end of financial year

NEW GRANT APPLICATIONS JULY 2017

GENERAL GRANTS	Amount requested	Total project amount
Cricklade Camera Club – seeking £987.00 for a new laptop and projector equipment for the club. View full application	£987.00	£987.00
Purton War Memorial and Village Centre Charity – seeking £807.00 towards a new pedestrian safety gate. View full application	£807.00	£1614.00

COMMUNITY AREA TRANSPORT GROUP (CATG)	Amount requested	Total project amount
Please see separate CATG report.		



**Royal Wootton Bassett and Cricklade
Investing in our Communities Newsletter
JULY 2017**

GENERAL GRANTS/CLLR INITIATIVES UPDATE 2017-18

May 2017	Amount requested	Total project amount
Dance Common Management Group - reinstatement of stone wall for Cricklade Bloomers	5,000.00	18,575.00
The Cricklade Festival - signage for Cricklade festival and similar events	1,000.00	350.00
Tockenham Village Fair - trestle tables	998.40	998.40
The Cricklade Band - new storage facility	992.03	992.03
Thames Pre-School - equipment to develop Forest School	350.00	350.00
Celebrating Age (CLlr initiative)	1,500	65,000
Support for the Great British Spring Clean (CLlr initiative) - litter picking equipment	Tbc - as part of larger order	Tbc

Paralympian Stephanie Millward OBE, and (small) friend officially cut the ribbon and open the Lyneham Primary School sensory room, with help from the community grant scheme.



The 3M's memory group in Lyneham enjoy their indoor curling set, quoits and reminiscence packs, purchased with community grant funding from the Area Board! This equipment is available for local groups to borrow.





**Royal Wootton Bassett and Cricklade
Investing in our Communities Newsletter
JULY 2017**

YOUTH GRANTS/COUNCILLOR INITIATIVES UPDATE 2017-18

May 2017	Amount requested	Total project amount
GreenSquare - Cricklade Skate Scoot BMX session	1,050.00	1,600.00
Cricklade Youth Provision Proposal (CMAS) - to provide the structure and support for Cricklade youth provision from June 2017 to June 2018, for 46 weeks of the year.	10,750.00	10,750.00
H5 Adventure days for 200 young people – joint with RWB Mayor's charity	3,000.00	6,000.00
Fun in the Sun - venue hire for rural sports programme in Purton	200.00	Tbc
Support for Healthy Schools	Tbc - as dependent on the number of schools taking part	Tbc
Launch 2 Learning - extension of project to Cricklade and Purton		



Royal Wootton Bassett and Cricklade Investing in our Communities Newsletter JULY 2017

USEFUL LINKS

Area Boards have authority to approve grants under powers delegated to them. Under the Scheme of Delegation Area Boards must adhere to the [Area Board Grants Guidance](#)

The community grant funding criteria and application forms are available on Wiltshire Council's website: [here](#).

Further information about the Community Area Transport Group (CATG) and youth grants can be found by clicking on the following links:

[Community Area Transport Group](#)
[Youth Grants](#).

Update for Royal Wootton Bassett & Cricklade Area Board

Update from	Recycle for Wiltshire Joint Venture
Date of Area Board Meeting	26 July 2017

Headlines

- Cricklade Festival – We had a stand at this event and spoke to 112 people about how to recycle more and reduce their household rubbish. We also ran an upcycling activity, transforming recycling plastic bottle caps and plastic bags into butterfly feeders. We signed up a couple of volunteers to help us with activities in and around Cricklade.
-
- We've begun work in Royal Wootton Bassett Academy and have organised waste workshops for next term. We've been in contact with other local schools and pre-schools and have organised waste workshops in Lyneham and Royal Wootton Bassett.
-
- We're attending more summer events with our stand and activities and are planning to work with the local libraries and holiday clubs.
-



Royal Wootton Bassett and Cricklade Community Identified Priorities Newsletter. July 2017

Children and Young People RWB and Cricklade Community Area

What has been done so far:

1. A **Launch 2 Learning** project has been funded by the Area Board to provide additional support to students at RWB Academy and Bradon Forest School to address the issue of **cyber-bullying, self-esteem and mental health**.

2. This Launch 2 Learning project will have additional benefits to the educational attainment of the secondary school students involved.

A **community grant has been awarded to Lyneham Primary School towards a sensory room**, this will help to improve the general wellbeing of all pupils at the school with the related benefit of improving the pupil's ability to learn.

3. **H5 Adventure - 200 adventure days have been funded for 8-16 year olds** across the community area at this local business, in association with RWB Town Council, Cllr Mary Champion (as the previous Mayor) and the Rotary Club. Places were targeted at young people less able to afford this adventure, for everyone to experience first-hand new outdoor activities (such as raft-building) and develop team-building skills.

The **Fun in the Sun** rural sports programme will be provided at Purton and Lyneham (working in partnership with MOD Lyneham).

Sports specific camps will be held over the Summer months for Slamdunkz basketball (Purton), tennis (RWB) and cricket (Cricklade). See here for Wiltshire Council's full Get Active programme for Summer 2017: <http://wiltssport.org/get-active/2112-wiltshire-councils-get-active-programme-summer-2017>

Community grants have been provided alongside sports development information and advice, to develop sports clubs across the community area, e.g. the 16 Feathers badminton club in Purton received just over £666 to improve their offering for younger players and are now working closely with the WC sports development team.

Support has also been provided to the **Duke of Edinburgh Open Centre**, RWB via a community grant and use of the community MPV.

Priorities November 2016

1. Mental and emotional health (65.12%)
2. Educational attainment (63.95%)
3. Positive leisure time activities (55.81%)



The beautiful sensory room at Lyneham Primary School, officially opened on 14th June by Stephanie Millward OBE, with help from a £2,500 community area grant.



Royal Wootton Bassett and Cricklade Community Identified Priorities Newsletter. July 2017

Community Safety

RWB and Cricklade Community Area

What has been done so far:

- 1. **CMAS** have been commissioned and briefed to address ASB in Cricklade, initially through street based youth work.

Cllr Bob Jones is calling a local action meeting with Cricklade Town Council, Wiltshire Police, GreenSquare housing and the Youth Offending Team to work together to share intelligence and address ASB in Cricklade.

A community grant has been awarded to GreenSquare to help put on a skate session for young people in Cricklade, to build engagement with them in the town.

Preventative work is being delivered by CMAS in Lyneham and RWB through the successful youth groups, each attracting c30 young people.

A community grant has been awarded to Cricklade leisure centre for **CCTV install** to monitor users of the centre.

- 2. Similarly to Cricklade, Purton is experiencing ASB at the Village Centre late at night. Cllr Jacqui Lay has just raised this with teams at WC who are just starting the process of working with other partners to deal with this issue.

Priorities November 2016

- 1. Anti-social behaviour (70.59%)
- 2. Highway safety (63.53%)
- 3. Domestic violence (50.59%)



gloucestershire mentoring & support

Did you know that youth grants are available from the Area Board? Contact your local Wiltshire Council councillor in the first instance to discuss your ideas!



Royal Wootton Bassett and Cricklade Community Identified Priorities Newsletter. July 2017

Culture

RWB and Cricklade Community Area

What has been done so far:

1. The Area Board has supported a **Celebrating Age** project with a small contribution being used to lever significant Arts Council England investment into the community area.

A Project Development Worker from Wiltshire Music Centre will develop a programme of work in consultation with existing groups of older people and representatives of charities working with these groups.

The programme will involve regular activity in the libraries and other community settings such as:

- live performance with a focus on words
- engagement activities for music, dance, visual art.

A community grant has been awarded to **RWB & District Arts Society** for equipment for their Spring Exhibition 2017.

A **Community Asset List** is under construction, allowing community groups, charities and town and parish councils to share their assets locally and avoid duplicating buying equipment when it can easily be borrowed, once ready, the list will be publicly available on the Our Community Matters website – if you have an asset which you’re willing to share, please get in touch – sharing is caring: alexa.davies@wiltshire.gov.uk, 01249 706610.

2. Investment has been secured for RWB library, for development as **Royal Wootton Bassett Community Hub and Library** in line with the Calne model, working in partnership with RWB Town Council.

Early conversations have been held with a wide range of partners for wider use of the community hub and library, which will include meeting rooms for the town which groups will be able to hire.

3. All library campaigns, such as the Summer Reading Challenge, continue to be supported in promotion by the Area Board.

Priorities November 2016

1. Affordable access to cultural activities (73.26%)
2. Library use (58.14%)
3. Diversity and social inclusion (58.14%)



Calne community hub and library is working well already and we are working closely with the library team there to learn from their experience!



Royal Wootton Bassett and Cricklade Community Identified Priorities Newsletter. July 2017

Economy

RWB and Cricklade Community Area

What has been done so far:

1. An **Apprentice Fair** is planned for 20th September at the Manor House Enterprise Centre, RWB.

An opportunity for local businesses to find out more about the apprenticeship offer from Wiltshire Council.

A chance for people of every age who are interested in becoming an apprentice to speak to other apprentices and to find out what is involved.

Bringing together employers, potential apprentices and third parties to provide clarity about what is available to them, to share information and to build links in RWB&C.

2. **Learndirect** will be providing a **FREE training course** at the Manor House Enterprise Centre (dates tbc) to support **over 50s** developing digital skills to help them re-enter the workplace.
3. The **WithIT** group continues to thrive, with help from Cllr Allison Bucknell, at the **RWB library on Mondays 10-12 noon**. Drop in to receive free help with learning to best use your device.

A very friendly group of **Cricklade digi-champions** meet in the Cricklade leisure centre cafe **every Monday between 10 and 12 noon** and are happy to help and support anyone from the community area who is struggling to get to grips with their technology. Why not pop along to see if they can help you? Of course, if you are a whizz with technology, perhaps you could support others to le herearn? Drop in to find out more.

4. The Wiltshire Online programme continues to make good progress. See here for more: <http://www.wiltshireonline.org/>

Priorities November 2016

1. Apprenticeship and work experience (71.43%)
2. Training and skills (70.24%)
3. Broadband and digital (52.38%)

Recipe finding at this WithIT session, RWB library.





Royal Wootton Bassett and Cricklade Community Identified Priorities Newsletter. July 2017

Environment

RWB and Cricklade Community Area

What has been done so far:

1. In the RWB&C community area, in total 172 people volunteered over the **Great British Spring Clean** weekend of 3-5 March 2017 and we collected 206 bags of rubbish, after litter picks were arranged in Royal Wootton Bassett, Lydiard Millicent, Lyneham, Bradenstoke, Tockenham and Cricklade.

Litter picking kits were purchased by the Area Board including litter grabbers, handi-hoops to hold bags open, hi-vis vests, sacks and more, which were given to groups who committed to do a regular clean-up of their patch.

2. A number of our town and parish councils have expressed their interest in the **WW1 tree planting legacy project** – thank you for all your support and your CEM will be in touch as soon as further information is available.
3. RWB&C has been successful in joining Tidworth and Westbury as one of the first community areas in Wiltshire to work with the **Wiltshire Wildlife Trust** to run a campaign to reduce litter across the community area and encourage people to reduce their waste and re-use materials where possible - see their written report to find out more about their **Campaign Plan**, including dates for your diary and how you can get involved.
4. In Purton the **Flood Operational Group** are working on getting landowners to clear out ditches and watercourses and Network Rail to clean out railway culvert.
5. Active community groups who have received community grant funding continue to make good progress, including the Purton Volunteers Footpath Group and Cricklade Dance Common.
6. The Area Board is delighted to note that RWB Town Council has taken on and enhanced the town's public toilets, thank you to them.

Priorities November 2016

1. Fly tipping and litter (74.12%)
2. Improving rights of way (42.35%)
3. Protecting the countryside (36.47%)



Civilians and military personnel joined forces for the Great British Spring Clean in Lyneham, a huge thank you to everyone who made this campaign such a local success.



Royal Wootton Bassett and Cricklade Community Identified Priorities Newsletter. July 2017

Health, Wellbeing and Leisure

RWB and Cricklade Community Area

What has been done so far:

1. Re mental health, see Children and Young People theme.
2. Area Board funding is being used to support primary schools across the community area to become accredited Healthy Schools. The following schools are currently **Wiltshire Healthy Schools**:

Royal Wootton Bassett Academy (bronze until October 2019)
 St Sampson's CE Primary School (bronze until April 2020)

The following schools are currently working towards meeting the standards or the next level:

St Mary's CofE Primary School Purton (joined May 2017 and are working towards bronze level)
 St Sampson's CE Primary School (currently bronze, now working towards silver level since June 2017)

The following schools have booked a place on the next Healthy Schools training in November 2017

Longleaze Primary School (previously silver from October 2014 - October 2016)
 Lyneham Primary School (previously silver from April 2015 - April 2017)
 Noremarsch Community Junior School

*St Bartholomew's Primary Academy are also expected to book a place, as they were unable to attend the training event in May 2017.

The Area Board supports this year's Wiltshire Council **BIG PLEDGE** campaign to encourage active, healthy lifestyles. Across the county 12,314 people have signed up to the challenge, including 45 schools, travelling over 300,000 kms already!

Wiltshire Council health trainer, Janice Bardwell, continues to deliver a wealth of information, encouragement and advice to anyone looking to improve their health. **Drop into the library on a Wednesday morning to meet Jan.**

Fit for Life - proposal to develop a seated sports programme in RWB for those aged 60+, with six or seven different sports, including seated volleyball, bowls, table cricket, new age curling and boccia. The suggestion is to start with boccia as a very inclusive sport which can be easily adapted to suit all levels of health and fitness. Further information to follow, once our sports development officer, Matt Pearson has finished delivering the Summer sports programme.

3. A successful **Health & Wellbeing Group** has been established, bringing together the Area Board, local GP surgeries, leisure centres and third parties to share information and develop the health and wellbeing network.

Priorities November 2016

1. Mental health (75.29%)
2. Healthy lifestyles (68.24%)
3. Support for carers (61.18%)



Royal Wootton Bassett and Cricklade Community Identified Priorities Newsletter. July 2017

Older People

RWB and Cricklade Community Area

What has been done so far:

1. **Ellen Blacker** has been appointed the Health & Wellbeing Champion for our community area for a second year. Working mainly with RWB&C's elderly and most vulnerable residents, Ellen also chairs the Health & Wellbeing Group. A Sunday Lunch Club has been set up at The Wiltshire for those who would otherwise be on their own on this day – 07557 922020, ellen.blacker@wiltshire.gov.uk.

Priorities November 2016

1. Social isolation and loneliness (80%)
2. Support for carers (57.65%)
3. Dementia (54.12%)



The **Men's Shed** project is up and running at RWB Fire Station, with great support from RWB & District Rotary Club. A second Men's Shed looks promising for Cricklade, with lots of interest in the stand at Cricklade Festival. The RWB Shed is working with RWB Community Together for South West in Bloom, find out more about the Shed here: <http://rwb-shed.uk/>.



Fantastic photo from the Grand Opening of RWB Shed – pop in on Thursdays 10-4 at RWB Fire Station, all welcome!

2. 3M's Memory Cafe

The 3M's are going strong and meeting in Lyneham - they received community grant funding for an indoor curling set, quoits, and little reminiscence packs (motoring and household), which are used by the group for people living with dementia and their Carers. The group also receive support at their Steering Committee and use the community MPV.

3. Safe Places and Dementia Friends

The Safe Places network continues to grow in RWB, Cricklade, Lyneham and Purton, with The Coventry building association in RWB as the latest recruit to the scheme, thanks to Linda Frost from the Caring about Dementia group. The number of Dementia Friends are building across the community area and Purton Parish Council will be really championing this cause in their parish.



Royal Wootton Bassett and Cricklade Community Identified Priorities Newsletter. July 2017

Transport

RWB and Cricklade Community Area

What has been done so far:

1. The **Community Area Transport Group** agrees funding for road safety improvements - currently projects include a new footway in Purton, work around North Wall in Cricklade and more. There are 4/5 schemes that CATG can consider at any one time - see report in the agenda pack.
2. As part of her Case Work, Cllr Jacqui Lay arranged for **ruts and potholes to be smoothed out at Hogs Lane, Purton** after this issue came to her attention whilst canvassing – excellent prompt action here.
3. The community area is lucky enough to have a **community MPV** which is available for community groups to use free of charge, subject to driver checks and registration. The vehicle is based at Lime Kiln in Royal Wootton Bassett and is already used by the local GP surgeries, Duke of Edinburgh Open Award Centre and the 3M’s memory group in Lyneham. Please contact your Community Engagement Manager, alexa.davies@wiltshire.gov.uk, 01249 706610 if you would like to use this vehicle. There are a number of local LINK schemes and Purton Age Concern bus is also available locally.
4. **Network Rail** continue to provide information and updates regarding their electrification programme at Area Board meetings, through the Friday Our Community Matters newsletter and via RWB&C social media platforms.
5. The Area Board welcomes a **new R1 bus route** between RWB and Swindon.

Priorities November 2016

1. Road improvement (81.18%)
2. Speeding and road safety (69.41%)
3. Access to public transport (65.88%)



This community MPV is available for FREE community group hire, subject to license checks – please contact your CEM, Alexa Davies to become a registered user.



Royal Wootton Bassett and Cricklade Community Identified Priorities Newsletter. July 2017

Housing

RWB and Cricklade Community Area

What has been done so far:

1. The neighbourhood planning process is supported by Wiltshire Council.
2. The Area Board is working closely with **GreenSquare** Housing as the largest local housing association to help address the issues they face. Work has commenced on a major GreenSquare redevelopment project bringing forward more affordable housing at Culverhay, Cricklade. GreenSquare sit on the Health & Wellbeing Group. Commitment to the RWB&C Child Poverty Action Plan (as presented at the 20.07.16 Area Board meeting) is ongoing.
3. **Superfast Broadband continues to be rolled out across the county** - update to follow.

Priorities November 2016

1. **Affordable housing (88.24%)**
2. **Deprivation and poverty (64.71%)**
3. **Digital engagement and broadband (48.24%)**



Royal Wootton Bassett and Cricklade Community Identified Priorities Newsletter. July 2017

LINKS TO USEFUL INFORMATION:

[WILTSHIRE INFORMATION NETWORK](#)

[WILTSHIRE JSA NETWORK](#) website

[ROYAL WOOTTON BASSETT & CRICKLADE AREA BOARD JSA report 2016-18](#)

RWB & C Project Bank – soon to be available on the revised ‘Our Community Matters’ website:

<http://rwbc.ourcommunitymatters.org.uk/>

For regular updates from the RWB&C Area Board ...

Follow us on Twitter - @RWBandCCEM

Facebook – Royal Wootton Bassett and Cricklade Area Board (Page)

AND sign up to *Our Community Matters* for your weekly *Royal Wootton Bassett and Cricklade local newsletter*: [here](#), we would love to hear from you.



Cricklade, Purton and Royal Wootton Bassett Community Policing Team Update



Hello and welcome to this Community Policing Team report.

Wiltshire Police recently ran a 'tweetathon' from the Crime and Communications Centre (CCC) at Police HQ. The event shared some of the calls received by Wiltshire Police to raise awareness of the breadth of work we deal with and to highlight the sorts of calls that are not emergencies.

This was part of wider reaching work, aimed at improving the service that people receive when they call us. We are aware of the issues that some people have experienced, particularly when using the 101 service.

As part of the Community Policing Model, we aim to deploy resources more efficiently. We look to ensure that the right people with the right training are in the right place and that starts with the CCC.

Wiltshire Police is on a journey of continuous improvement and will always seek to ensure that the service we provide is at the high quality you rightly deserve and expect.

Please follow us on:

Twitter <https://twitter.com/wiltshirepolice>

Facebook <https://www.facebook.com/wiltshirepolice/>

Or sign up to Community Messaging <https://www.wiltsmessaging.co.uk/>

Crimes that have an impact on the community reported between 8th May 2017 and 18th July 2017

There is an excellent website where crimes for an area can be mapped the link to it is here

[UK Crime figures](#)

I am therefore only including details of burglaries or any series of crimes that have occurred in the area.

On 23rd May 2017 a Burglary occurred at a residential address in Wootton Bassett, money and Jewellery were stolen, suspects for this have been charged for this offence (see next page for more details).

On 2nd June 2017 between 06:30 and 16:30, a Burglary occurred at a residential address in Wootton Bassett, the garage was broken in to and a toolbox and tools were stolen.

On 24th May 2017 a Burglary occurred at a Residential address in Wootton Bassett, a window was smashed and money/Jewellery were stolen. Suspects for this have been charged for this offence (see next page for more details).

On 8th June 2017 Sheds were broken in to at a commercial premises in Cricklade, damage has been caused and stored plants/bulbs were stolen which were for the town centre on behalf of a charitable organisation.

In the early hours of the 12th June 2017 a Shed was broken in to at a residential premises in Wootton Bassett although nothing was taken.

A Business premises was broken in to on the 9th June 2017 on Wootton Bassett High Street where cosmetic items were stolen, this occurred at about 5am and enquiries are ongoing.

At 10pm on 28th June 2017 suspect/s have attempted to break in to a garage at a residential premises in Purton, they were disturbed by the sound of a dog barking and ran away. No suspects have been identified.

Between the 17th May and 20th May 2017 suspect/s have broken in to a Business owned container in Cricklade and stolen a number of items of tools as well as stealing a trailer located outside. No suspects have been identified.

At approximately 20:30 on 7th July 2017 someone has entered a room within a hotel in Cricklade and stolen a quantity of money from inside.

Between 17:00 on 26th May 2017 and 07:15 on 27th May 2017 suspect/s have attempted to break in to a vacant new build residential house and garage in Wootton Bassett, no suspects have been identified.

Good News

Royal Wootton Bassett Burglary suspects convicted.

(The below is taken from the Swindon advertiser)

A PAIR of brothers who again went on a burgling spree while on early release from prison are back behind bars.

Mark and Gary Bulmer were caught red handed after an alert neighbour spotted them acting suspiciously on a residential road in [Highworth](#).

And once they were arrested they admitted to raiding three more homes in Chippenham and two in Royal [Wootton Bassett](#).

Tessa Hingston, prosecuting, told Swindon Crown Court how a resident spotted Mark, 23, and Gary, 25, on a residential Highworth road on Wednesday May 31.

After following them briefly on to Henley Drive at about midday he saw they had gone into a back garden so told his partner to call the police.

When officers arrived the pair were still inside the property and after shouting 'police with taser' they found Gary crouching in a cupboard and Mark hiding under a bed.

In his pocket Gary had £715 in cash as well a £750 Pandora charm bracelet, another by Vivienne Westwood along with two necklaces.

When the victim returned to the family home she told officers that a window at the back had been broken and the raiders had made a mess searching the house.

Miss Hingston said the brothers also admitted carrying out six other break ins shortly before the Highworth raid.

They made off with more than £3,000 worth of property from homes in Station View and Vale View, in Royal Wootton Bassett, and in Chippenham three on Greenway Lane and one in Langley Road.

Mark, of no fixed abode, and Gary, of Northampton Street, Swindon, each admitted burglary and asked for six matters to be taken into consideration.

The court heard that both had long histories of house breaking and each stood to be sentenced as 'three-strike' burglars.

Both brothers were last jailed in 2015 with Gary being released in November last year and his brother around the same time.

Lee Mott, for Mark, said that since the pair were remanded in custody their gran had been burgled and they now knew the impact it had on people.

He said that his client was also prepared to write to his victims, or even meet them, to apologise for what he has done.

Suzanne Payne, for Gary, pointed out the raid took place during daytime when the property was unoccupied.

She said he had also been upset after hearing his grandma in tears on the phone after she became a victim and hoped to change his ways.

Jailing them for three years and four months Recorder Nicholas Atkinson QC said: "The courts always take the offence of burglary seriously.

"Very seriously indeed because for the victims of burglary it is almost like a personal physical assault on them."

Wiltshire Police

HOME SECURITY



Don't be caught out by burglars!



County lines drug networks

National issue, local problem

What are 'county lines'?

Urban criminal gangs travelling to Wiltshire to sell illegal drugs.

They use a single telephone number for customers ordering drugs, operated from outside the area, which becomes their 'brand'.

If you see anything suspicious call
Wiltshire Police on 101 or
Crimestoppers anonymously on 0800 555 111



Local Priorities

Since the Community Policing Team Model rolled out, we have been setting the local area priorities in a more fluid way. The priorities, in the most simplistic form, are what officers are expected to be doing, and where they should be patrolling, when they are not responding to ongoing crimes or incidents, or not carrying out enquiries relating to those crimes and incidents.

The priorities are set every two weeks and may be long term or short term. They are decided upon by Police Sergeant and Inspector using various information including:

- the views and concerns of the public expressed at area board and other public meetings.
- reviewing crime reports to enable the identification of crime series or identification of prolific offenders.
- reviewing logs of calls created by the control room that often highlight problems with antisocial behaviour, speeding, dangerous driving etc. that impact the community in a detrimental way.
- evaluating information received from the Police Community Support Officers and the Community Coordinator, who assist with identifying local issues and working on medium to long term issues for the community.
- the input of the team sergeants who supervise the PCs in the sector and allocate and manage crimes and incidents as they are reported.
- various other departments can also add to this picture such as intelligence units and crime analysts.

The force control strategy is also used to evaluate the priorities considering threat, harm and risk.

The priorities for the whole of this Community Policing Team i.e. Royal Wootton Bassett and Cricklade have between May and July included :

Continued efforts at reducing the anti Social Behaviour issues in the Cricklade area by working with partner agencies to assist with engagement and enforcement of those thought responsible.

Proactive investigation work in to Burglaries in the Wootton Bassett and Cricklade area.



The link below is for Community Messaging. The Community Coordinator for this area sends out a daily message, if there has been any crime that will benefit the community to be aware of. This includes thefts, scams and burglaries, the aim is to inform you of what is happening in your area, help you take any actions to avoid becoming a victim of crime and to alert you as a potential witness to any crime. Its easy to sign up and only messages, relevant to your area, are sent to your email inbox.

<https://www.wiltsmessaging.co.uk/>

The email address for the Wiltshire North Community Policing team is
northwiltshirecpt@wiltshire.police.uk
Please phone 101, or 999 in an emergency to report any incidents or
crimes

This report has been prepared by PC 2608 Stuart Welch



Update for Royal Wootton Bassett & Cricklade Area Board

Update from	DWFRS District Commander Jason Underwood
Date of Area Board Meeting	26/07/17

Headlines/Key Issues

- Still looking for new Firefighters, please look at website or come and visit at your local Fire Station.
-

- Safe and Well Checks are available and free on website
-

- RWB Incidents since last Area Board up to 05/07/17

Automatic Fire Alarms - 7
Fires - 13
Other - 1
Special Service - 6

Total – 27 Incidents

Cricklade Incidents since last Area Board

Automatic Fire Alarms - 7
Fires - 5
Other - 7
Special Service - 1

Total – 20 Incidents

A number of these incidents are duplicates where both stations attended the same incident. Both stations also support colleagues across Wiltshire for relief crews and enhancing our attendance at certain incidents.

July 2017

Overview

NHS Wiltshire Clinical Commissioning Group (CCG) is responsible for commissioning a broad range of healthcare for the population of Wiltshire. We are led by experienced local GPs drawn from across the county, who provide clear clinical leadership to the big decisions affecting the future of healthcare provision in Wiltshire, carefully tailored to meet the differing needs of people locally.

Our vision is to ensure the provision of a health service which is high quality, effective, clinically-led and local. We are committed to delivering healthcare that meets the needs of Wiltshire people, to consult and engage with our population to enable them to be involved in decisions made about health services and to deliver those services to people in their own homes or as close to home as possible.

The right healthcare, for you, with you, near you

New Interim Chief Officer joins Wiltshire Clinical Commissioning Group

Linda Prosser has joined Wiltshire Clinical Commissioning Group (CCG) as Interim Chief Officer.

Chair of Wiltshire CCG, Dr Peter Jenkins said: "We look forward to working with Linda and are confident she is well-placed to lead us through the challenges we know are ahead of us".



Ms Prosser, who joins the CCG from NHS England South West where she was Director of Assurance and Delivery, said:

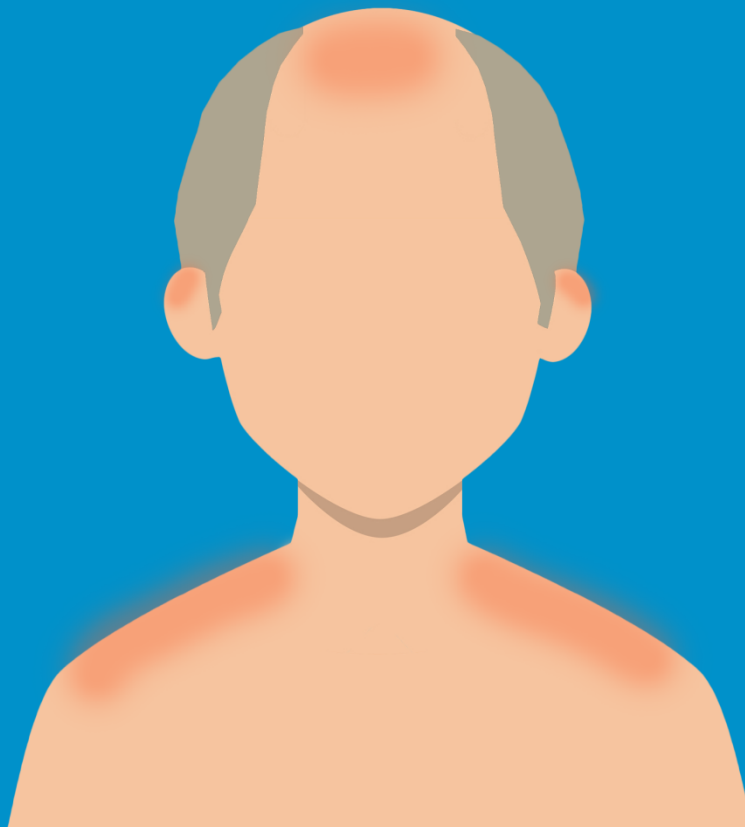
"I'm delighted to join Wiltshire Clinical Commissioning Group. This is a very strong CCG with a good track record that is well placed to rise to the challenges facing the health and care system in the next few years. I am very pleased to be a part of that. We will be working very closely with our colleagues in Wiltshire Council to this end, including the appointment of a shared leadership role across the CCG and Adult Social care. I intend to provide the leadership and support to the CCG during this period up until this new post is taken up. Meanwhile we will continue to put local people at the heart of what we do to commission healthcare services that get the best possible outcomes for them."

Ms Prosser replaces Tracey Cox, who took on the interim role in October 2016 alongside her Accountable Officer duties for Bath and North East Somerset CCG, and has now returned to that role.

Getting painful sunburn just once every two years, can triple your risk of melanoma skin cancer.

Don't risk it. Cover up mate.

#CoverUpMate





Young people urged to speak out about health and care in Wiltshire

A young carer from Trowbridge, who has carried out more than 200 hours of volunteering, is urging his peers to get involved in a new scheme. 19-year-old Scott Kane, from Hilperton, has helped to look after his mum, who has cerebral palsy, since the age of three and has found volunteering has boosted his confidence.



Scott is now helping to promote **YouthWatch** - a new scheme launched by Healthwatch Wiltshire, which aims to help young people have a voice on the way health and care services are run in the county.

The Lackham College student was part of a group of ten 'Young Listeners' from Healthwatch Wiltshire and Community First who spoke to hundreds of their peers about their views and experiences with health and social care over the last year. Their findings went into a report which was shared with health officials who are making changes to the way services are run.

Scott said: "As young people we often feel that we don't have any authority when talking to a doctor, but through YouthWatch we can help give other children and young people that power."

YouthWatch will train young volunteers (aged from 14-25) to listen to the views of children and young people in the county to find out what they think about health and care services. They will then feed this information back to decision-making boards to shape health services in Wiltshire.

Volunteering has helped Scott develop new skills and boosted his confidence. He explained: "When I got to my teenage years I decided to get involved in volunteering to meet new people and help others. Due to looking after my mum from a young age it has made me more caring, more understanding and I'm able to value life for what it is. I've done over 200 hours of volunteering now and this makes me happy.

"I thrive on helping others and volunteering has helped to give not only me a voice but others too. Young people often don't get heard because of their age but through YouthWatch we can make a real impact on the way services are run locally. I would highly recommend others get involved and join YouthWatch, not only for their own benefit but to give something back to the wider community and have a real impact on the way services are run."

Contact us:

Tel 01225 434218

info@healthwatchwiltshire.co.uk

healthwatchwiltshire.co.uk

YouthWatch
Speak out!
Wiltshire

Young people shaping health & care

If you, your child, or someone you support or look after would be interested in joining the YouthWatch scheme, get in touch or visit healthwatchwiltshire.co.uk/youthwatch for more details.

Healthwatch Wiltshire is a local independent organisation which exists to speak up for people on health and care. If you have used a service recently then we would like to hear from you. We use what people tell us when we meet with the commissioners and providers of services to make sure that they take account of your views and experiences.

Update for Royal Wootton Bassett & Cricklade Area Board

Update from	Wiltshire Family Learning
Date of Area Board Meeting	26 July 2017

Headlines/Key Issues

- Successful delivery of Wiltshire Family Learning programmes 16/17 working in partnership with Noremarsh Junior School and St Bartholomew's.
- Recruitment supported by schools, children's centre and Parent Support Adviser; Family Learning programmes funded by Education Skills Funding Agency and must engage with learners who haven't achieved a L2 English/maths; aim to support so can achieve L2 qualifications and offer signposting opportunities to progress to further learning and employment.

-
- Family SEAL – 14 learners completed course @ St Bartholomew's
 - Family Animation – 3 learners completed course at Noremarsh
 - Family Functional Skills English 2 learners achieved L2 English qualification at Noremarsh (1 learner attended and still to complete)
 - 3 learners attending Family Learning Employability programme post qualification

-
- Key issues were recruitment of appropriate learners; low number on courses; will broaden offer to Cricklade using on the ground knowledge and link up with Cricklade Children's Centre for recruitment. Families may access courses using transport.

-
-



Royal Wootton Basset and Lyneham – April and May 2017

SUMMARY:

April and May have been months characterised by a considerable amount of work behind the scenes to allow the face to face work to continue successfully. I will split this summary into these two themes!

Behind the scenes:

- CMAS has advertised, interviewed and recruited three new members of staff to cover staff absence and to allow us to work across wider geographical area
- CMAS has completed DBS (police) checks with all staff, back-filling lapses
- CMAS has put all staff on to payroll and started paying them in line with HMRC responsibilities
- We have had one staff meeting where all new and old staff met and discussed the past, present and future

Face to face:

- The work has continued apace with over 20 young people attending each session
- Themes of work most regularly addressed by youth workers are “relationships and sexual health” and “illegal drugs”, but with several times “mental health/being part of armed forces” coming up
- Four young people have been supported to take up Chlamydia tests (and “do it yourself” postal screening test that allows young people to catch this potentially damaging infection early)
- Sessions have been run for “Vegetarian week”, cooking vegetarian foods and giving young people quizzes to get them thinking about what they put in to their bodies

TWO MONTHS SESSIONS:

5/4/17 – Lyneham – 34 attendees

6/4/17 – RWB – 21 attendees

13/4/17 - RWB – 22 attendees

19/4/17 – Lyneham – 24 attendees

20/4/17 – RWB – 24 attendees

27/4/17 – RWB – 28 attendees

28/4/17 – Lyneham – 17 attendees

3/5/17 – Lyneham – 24 attendees

4/5/17 – RWB – 23 attendees

11/5/17 – RWB – 28 attendees

12/5/17 – Lyneham – 28 attendees

17/5/17 – Lyneham – 27 attendees

18/5/17 – RWB – 30 attendees

25/5/17 – RWB – 26 attendees

HALF TERM

ISSUES FACED:

The building we use in RWB is not suitable for purpose. We have a key to a toilet we need to leave the main building to get to, but this means one member of staff is basically “toilet duty” for the whole sessions!

PARTNERSHIP WORK:

We have been working with the committees or individuals who run halls and have, in the past couple of years, moved about a lot in RWB trying to find the best facilities in the right location. On 12th July we are meeting with local residents, town councillors, PCSO's and interested others (arranged by Sue Hughes) to start looking at the issue of youth facilities in the area as a wider issue.

We are also working with Bridge Training Ltd to design, write and deliver a BTEC for young leaders working in youth clubs. We have agreed a price and process with this well-respected training provider, and now just need to recruit enough young leaders (aged 16-18) across North Wiltshire to make this feasible. We think we need eight for it to work and our youth workers are working hard with their groups to find the right candidates.

CMAS: THE BIGGER PICTURE

Community Mentoring and Support CiC (CMAS) continues to grow. In Gloucestershire our educational mentoring programme is growing in popularity, offering solutions to schools and local authorities who need to offer an education to young people but cannot house them safely and successfully in any established provision. We have recently advertised for staff in Devon and Cornwall and appointed a Director to lead in this geographical area to roll out this provision there.

Also in April we opened the "GCAFE" – a commercial café that operates as a social enterprise to raise funds for the core aims of CMAS. It also offers regeneration to an unused council building AND work experience for young people – it's a win, win, win! We hope to replicate this model in other areas.

DEVELOPMENT OF THE YOUTH CLUBS:

We are moving outside for the summer, from June onwards. The reason for this is that we have a wider reach with young people: the ones who come to the youth clubs already are told where to meet and so attend; and of course, by being out in public we have the chance to meet and speak to new young people.

In September, we have managed to get the hall in Lyneham on the same day each week. This is a small but significant victory both in terms of getting consistency with young people and also in planning staffing each week. This hall is really good and the committee very supportive of our work with young people.

The issue of the hall at RWB is one that we hope to address through partnership work, as above.



Cricklade Youth Project Report – June and July 2017

SUMMARY:

June and July have seen the start of the Cricklade Youth Project. The aim of the project is to reduce the amount of anti-social behaviour being committed by young people by engaging them in meaningful youth projects in the town.

Earlier this year a piece of research was done with young people in Cricklade. The outcome of this was that they were not keen on entering “youth clubs” and preferred to hang out in the town with their friends. This is, of course, their right but in recent months there has been a spike in reports of anti-social behaviour from this group. Therefore, the objectives of our project are:

- To form positive relationships between the young people involved in ASB and professional, trustworthy youth workers
- To understand their preferences for hanging out in certain places, and if necessary negotiate with them about hanging out in other more pro-social places
- To challenge anti-social behaviour when it arises and/or when it is reported by the group
- To work with the young people holistically about other issues in their lives (the youth work staples of relationships, school, work, drugs, alcohol, sex etc)
- If the group is willing, at some point this year, to move with them inside for a couple of evenings a week to give them a positive alternative to hanging out on the streets/parks

Continued overleaf

TWO MONTHS SESSIONS (with number of young people engaged with):

5/6/17 – 8 young people

7/6/17 – 12 young people

12/6/17 – 13 young people

14/6/17 – 18 young people

19/6/17 – 15 young people

21/6/17 – 25 young people

26/6/17 – 8 young people

28/6/17 – 13 young people

30/6/17 - No FIGURES

5/7/17 – 8 young people

7/7/17 – 17 young people

12/7/17 – 15 young people

14/7/17 – 27 young people

ISSUES FACED:

All young people have been polite to our youth workers; after a couple of months most tolerate our youth workers presence and over half seem to enjoy having youth workers about in their groups.

SUMMARY (continued):

In the first two months our youth workers have made a good start. They work Mondays and Wednesdays between 6-9pm (and wear distinctive light blue hoodies – do say hello if you see them!) and tour the town going to the places we know young people hang out.

Detached (or street based) youth work is a difficult task being at the mercy of the weather, the changing plans of young people and working out which group(s) are the best to work with. We have made contact with a group of about 20 who are (we are very sure) the ones involved in ASB about Cricklade. They are happy to chat to our youth workers and have done some issue based work on sexual health and drugs.

The next stage for our youth workers is to build on these relationships so that they have a “pull” with the young people. Moral authority is a very hard thing to quantify but that is what we aim for, where through virtue of the relationships they are in with our responsible adults young people will be willing to reflect on, and hopefully change, patterns of behaviour.

PARTNERSHIP WORK:

Just this week our MD and Lead Youth Worker (Ben Evans and Jude Deaman respectively) attended a meeting with representatives from Wiltshire Council, Green Square Housing, Wiltshire Youth Offending Team, Cricklade Town Council and the local police. This was a good forum for professionals and community members to share information to ensure our efforts are directed in the right place.

CMAS behind the scenes:

As new youth project the first months have been characterised by a considerable amount of work behind the scenes to allow the face to face work to continue successfully. Behind the scenes the Managing Director (Ben Evans) and Business Manager (Kate Tilling) have been busy:

- Advertising, interviewing and recruiting two new members of staff to cover to work specifically in Cricklade
- Completing DBS (police) checks with all staff, back-filling lapses
- Putting staff on to payroll and started paying them in line with HMRC responsibilities
- We have had one staff meeting where all new and old staff met and discussed the past, present and future

Away from Wiltshire Community Mentoring and Support CiC (CMAS) continues to grow. In Gloucestershire our educational mentoring programme is growing in popularity, offering solutions to schools and local authorities who need to offer an education to young people but cannot house them safely and successfully in any established provision. We have recently advertised for staff in Devon and Cornwall and appointed a Director to lead in this geographical area to roll out this provision there.

Also in April we opened the “GCAFE” – a commercial café that operates as a social enterprise to raise funds for the core aims of CMAS. It also offers regeneration to an unused council building AND work experience for young people – it’s a win, win, win! We hope to replicate this model in other areas.

Update for Royal Wootton Bassett & Cricklade Area Board

Update from	Royal Wootton Bassett Town Council
Date of Area Board Meeting	26 July 2017

Headlines/Key Issues

- Royal Wootton Bassett Town Council supported the Royal Wootton Bassett Royal British Legion with their County Parade and Armed Forces Day parade

- Royal Wootton Bassett Town Councils newly refurbished Public Toilets situated in Boroughfields opened on Saturday 1st July 2017

- Royal Wootton Bassett Town Council supported the Royal Wootton Bassett Carnival held on Saturday 20th May 2017

- Museum maintenance works of renovation to the staircase and minor shelving works now complete, in line with the Conservation Officers recommendations.

- Val McLea who is a long standing, very committed CCTV Volunteer has been awarded an MBE for his dedication and commitment to the Towns CCTV suite

- On Sunday 2nd July 2017 many motor bikes came through the Town enjoying a Ride of Respect

- Refurbished Poets field Toddler Play Area grand opening on Tuesday 11th July 2017 at 2pm

- It is Merchant Navy Day on Sunday 3rd September 2017. Royal Wootton Bassett Town Council will be flying the Red Ensign flag from Friday 1st September to Monday 4th September 2017

Update for Royal Wootton Bassett & Cricklade Area Board

Update from	Cricklade Town Council
Date of Area Board Meeting	26 July 2017

Headlines/Key Issues

Neighbourhood Plan - Public Consultation

Wiltshire Council are currently running a round of public consultation on Cricklade's Draft Plan, and if you wish to comment then please access their online consultation portal at wiltshire.gov.uk or use the link on our website crickladenp.org.uk.

Our website also has the Draft Plan and supporting documentation available for you to download, and we also have hard copies available to read here in the front office. The consultation runs from Monday 24 July until Monday 18 September.

Hares Chase - Purton Road Housing Development

The Planning, Conservation and Transport Committee has objected to the proposed mix of housing (2 one bed, 12 two bed, 24 three bed, 32 four bed) stating that more 2-3 bed are required and fewer 4 bed. Objections were also raised in regard to the open space allocation as the two attenuation ponds have been included as 'public open space' there is however, a small play area included in the plans. A new Flood Risk Assessment has been received, which is lacking in various respects, and so the Planning, Conservation and Transport Committee have requested that this issue is scrutinised in more detail.

Cricklade in Bloom 2017

Councillors will be judging the Cricklade in Bloom competition between Monday 24 July and Friday 4 August. The categories are:

Best Hanging Basket, Best Container, Best Front Garden, Best Front Door, Best Florally Decorated Public House and Best Florally Decorated Commercial Premises.

Any area judged (eg back garden or individual property) that is not visible from the road, please contact us and we will add your details to the itinerary.

COMMUNITY AREA TRANSPORT GROUP ACTION / NOTES LOG

Royal Wootton Bassett and Cricklade CATG - Date of meeting: 1st June 2017

COMMUNITY AREA TRANSPORT GROUP ACTION / NOTES LOG

	Item	Update	Actions and recommendations	Who
	Royal Wootton Bassett and Cricklade CATG – Date of meeting: 1st June 2017			
1.	Attendees and apologies			
	Present:	Wiltshire Councillors: Bob Jones, Mollie Groom, Jacqui Lay, Allison Bucknell, Chris Hurst Parish/Town Councillors: Mark Clarke (CrickladeTC), John Webb (Lyneham & Bradenstoke), Dean Cobb (Lydiard Millicent), Geoff Greenaway(Purton), Rupert Pearce (Broad Town), Vernon Montgomery (LM) Officers: Highways - Martin Cook, Steve Hind CEM - Alexa Davies	Area Board to note.	
	Apologies:	Mary Champion, Mike Farrow (RWBTC)		
2.	Notes of last meeting			
		The notes of the previous meeting have been distributed	Noted	
3.	Financial Position			

COMMUNITY AREA TRANSPORT GROUP ACTION / NOTES LOG

		Finance sheet to be presented	Separate sheet provided by SHind Schemes being considered amount to £28,600. Remaining budget for 17/18 £14,435. Potential to be more subject to the contribution from Purton pc towards the Widham Bridge/ Station Road schemes	
4.	Top 5 Priority Schemes			
a)	<p><u>Issue 1732</u></p> <p>Purton, Manor Hill.</p> <p>Proposed footway</p>	<p>Geoff Greenaway to liaise with landowner- has agreed but wants new post and rail fence and hedge planting.</p> <p>Updated cost estimate £9600. Road closure required. PC contribution £2400 plus hedging and fencing.</p> <p>Preparation of works information being undertaken including liaison with Ringway to establish costs for traffic management and surfacing for the agreed informal style of footway.</p>	<p>SH working on the package, meeting with Ringway to get costs etc. should be by end of September. GG would welcome news on a start date</p> <p>Ringway currently has a full programme so work may not commence until Spring 2018. Purton PC can progress some work to hedging/ fencing. Cost not known until Ringway put together the final package. AB any increase needs to come out of CAT G budget and not from pc.</p>	SH /GG
b)	<p><u>Issue 3986</u></p> <p>The Forty/The Fiddle/ Chelworth Rd. HGV damage</p>	<p>Weight limit is in place. Not acceptable to have 'Unsuitable for HGV's' signs</p> <p>Direction signing review costing up to 5k. CTC agreed 50%.</p> <p>Mark Stansby has met with Cricklade TC. Briefing note describing recommendation sent to Cricklade TC for consideration.</p>	<p>Mark Stansby has put together a report fo Cricklade TC who need to discuss and feedback to Mark Stansby. Then costs need to be agreed and programmed.</p>	Mark Stansby

COMMUNITY AREA TRANSPORT GROUP ACTION / NOTES LOG

c)	<p>Issue 3629</p> <p>Cricklade, Chelworth Rd - speeding</p>	<p>Metrocount done. 46mph in derestricted area. Review on speed – CTC agree to 50/50 funding. If TC support CATG will prioritise. SH has driven the site. A review could be undertaken but it is unlikely that a speed limit of less that 50mph will be recommended. Cost for Atkins to undertake review will be £2.5k. Traffic Advisory criteria circulated.</p>	<p>Advisory criteria were circulated. The area does not meet the criteria. To go back to CTC for a view as to whether to proceed with review</p>	
d)	<p>Issue 4490</p> <p>Submitted 17/02/16</p> <p>Road calming required on Station Road in Purton</p>	<p>Site meeting with SH, GG, RJ, JL undertaken. A scheme of natural traffic calming by allocating parking areas on both sides of the road being investigated by SH with the aim to produce a solution so that GG can discuss with Parish Council and residents.</p>	<p>SH has come up with some proposals for parking bays to be marked out. PC to review and report back to next meeting. Does not include waiting restruictions. SH to liaise with GG and PC ref whether bays are in the right place, also to do a scheme with yellow lines. To discuss with PC and feedback</p>	<p>SH/Purton PC (GG)</p>
e)	<p>Issue 4458</p> <p>Submitted 02/02/16</p> <p>Speeding Issue.Speed of traffic entering and leaving Purton at Widham by railway bridge.</p>	<p>85% speed of 37.8mph SH has discussed developing priority build outs with GG, RJ and JL on site. Solution being developed so that GG can discuss with residents.</p>	<p>GG has preliminary layout, PC will need to consult then go back to SH to work up a more detailed proposal.</p>	<p>GG</p>

COMMUNITY AREA TRANSPORT GROUP ACTION / NOTES LOG

Additional schemes proposed 5/1/2017				
a)	<p>Issue 4412</p> <p>Traffic management/ speeding/ parking at North Wall, High Street Junction, Cricklade.</p>	<p>Site meeting undertaken with John Coole and Duncan May. Town council to progress approval for new parking area off North Wall. Full TC agreement in place to progress for parking on CTC land at N Wall SH can develop waiting restrictions once approval process for parking area is complete.</p>	<p>No action from Wilts Council. CTC still looking at providing off street parking.</p>	
b)	<p>Issue 4567</p> <p>Submitted 29/03/16</p> <p>Speeding Broad Town</p>	<p>SH has looked on site to try and establish possible locations for build outs with difficulty, particularly with the parking extents used for the school drop off/ pick up. SH is now considering locations for metrocounts at no cost to the PC which could help determine a solution.</p>	<p>SH has had another look. Not clear where you could put any build outs. No appetite for build outs. Broad Town have asked about SIDs. Illegal 30mph rondels have appeared and are illegal. Martin Cook was asked to write something about the implications of this to share with PCs. SH will find info on SIDs and get send through to BTPC.</p>	SH / MC
c)	<p>Issue 5026</p>	<p>Amended signing and road marking roundels to be prioritised.</p>	<p>Next in the queue. No progress as yet.</p>	

COMMUNITY AREA TRANSPORT GROUP ACTION / NOTES LOG

	Submitted 29/11/16 Safety at B4069 junction Bradenstoke			
5	Other Priority schemes			
c)	<u>Issue 4076</u> and <u>Issue 4367</u> The Butts, Lydiard Millicent. Bus stop request	PC have discussed at last meeting to go ahead with this, requires communication with School by PC (i.e. discuss the travel plan). If no progress by next meeting issue will be closed. Liaising on school transport plan. PC contribution £2500. Dean Cobb meeting with Jamie Mundy 6/1/2016 to talk about waiting restriction review for Lydiard and Purton. This may mean that CATG does not have to pay	Jack Frances – yellow lines and parking restriction are being looked at outside of CATG. CLOSE!! .	
d)	<u>Issue 4465</u> HGV drivers attempting to pass through Hollow Way Bradenstoke causing damage to the verges and disruption and potential danger to residents and Emergency services.	Submitted 04/02/16 HGV Weight Restriction will be implemented Spring 2017 so HGVs should not be using the road. Monitor after the weight restriction is in place.	Weight restriction should be implemented early July 2017.	
e)	<u>Issue 4591</u> No Right Turn-Lane -Junc opp Sally Pusseys pub Swindon Road	Mark Stansby's team is looking at this area.	MC - M Stansby team has looked at this and some signage has been put in. Brown tourism signs for Sally Pusseys. Right turn wont fit in. need to check with MS to see if this was a local road safety scheme in which case not a CAT G issue. CLOSE if	Mark Stansby / MH

COMMUNITY AREA TRANSPORT GROUP ACTION / NOTES LOG

			feedback from Mark Stansby says work is complete	
f)	Issue 4574 <i>Submitted 01/04/16</i> Increasing amounts of traffic, Greenhill	LM PC requesting a metro count.	Metrocount has been requested. Alexa Davies will check if results have been sent back	AD
g)	Issue 4505 <i>Submitted 25/02/16</i> Speeding Along Nore Marsh Road RWB	High volume of traffic speeding vehicles especially trucks site traffic down Nore Marsh Road between Nore down Way and Washbourne Road Wootton Bassett. Refer to TC. Alexa to talk to RWB TC with a view to metrocount after Network Rail works finished	CHurst – trying to get a speedwatch scheme arranged. Needs a metro count request to be put in by the TC.	CH
h)	Issue 4805 <i>Submitted 5/08/16</i> Lyneham. Crossing request along A3102 – RWB side of the B4069 junction.	SH has had a look. It is possible to install dropped kerbs near to the bus stop but location is not suitable for a traffic island.	May be tricky to put in an island – possible dropped kerbs. Not sure what would work – too busy for a crossing. Not likely to be achievable – JW to let pc know CLOSE	
i)	Issue 4797 <i>Submitted 3/08/16</i>	Missing 30mph. Martin Cook looking at replacing the sign. Within 3 months. METROCOUNT to be done after 30mph	Missing 30mph sign put back up. 50mph sign to be put up asap. MOD offered to put up SIDS at the crossing.	

COMMUNITY AREA TRANSPORT GROUP ACTION / NOTES LOG

	Lyneham. Speeding at zebra crossing outside MOD main entrance		. CLOSE	
j)	Issue 4771 Submitted 19/07/16 The Peak, Purton Parking issue at start and end of school.	Waiting Restriction requested. Can this be added to the list for Purton? Dean Cobb and GG to ask Jamie Mundy to see if this can be added.	CLOSE – deal with under waiting restrictions	
k)	Issue 4769 Submitted 19/07/16 The Peak, Purton Parking issue at the start and end of school.	Waiting restriction request. PC support? See 4771	CLOSE – deal with under waiting restrictions	
l)	Issue 4650 Submitted 17/5/2016 Beaufort Park estate RWB Sign request for Children crossing road	Town Council support? Refer to RWB TC	This is on unadopted roads so there is nothing we can do. CLOSE.	
6.	New Requests / Issues (Issues can be viewed in full from the Area Board Section on the Wiltshire Council Website)			

COMMUNITY AREA TRANSPORT GROUP ACTION / NOTES LOG

a)	<p>Issue 5160</p> <p>Submitted 20/2/2017</p> <p>Safety concerns on A3102 towards RWB.</p>	PC support?	<p>Lydiard Tregoze pc</p> <p>Asked for a minuted decision for this that they do not support this.</p> <p>C Hurst – would be helpful if the temporary 60mph sign was moved westward. Need to write to streetworks to ask them to relook at this. MG or CH to write to them.</p>	MG/CH
b)	<p>Issue 5083</p> <p>Submitted 10/1/2017</p> <p>Road priorities at Tadpole Lane, B4533 and unnamed lane</p>	PC support?	<p>Purton PC needs to give feedback.</p>	GG
c)	<p>Issue 5082</p> <p>Submitted 9/1/2017</p> <p>Safety concerns at Purton village centre.</p>	PC support?	<p>Purton PC needs to give feedback.</p>	GG
d)	<p>Issue 5069</p> <p>Submitted 5/1/2017</p>	PC support?	<p>CHurst – doesn't know if pc have fed back. DYL would solve this.]</p> <p>TC probably would want something done and would pay 25% towards this. Need to have</p>	MC/ CH

COMMUNITY AREA TRANSPORT GROUP ACTION / NOTES LOG

	Car parking at Springfield Crescent and emergency vehicles.		<p>their feedback / minutes</p> <p>CHurst wants this dealt with as a priority.</p> <p>Suggest that he contacts Jack Francis and Jamie Mundy to see if this could be coming in under their budgets.</p> <p>MC suggest a white line 'bar' marking – he can instruct on this could be quicker process plus we can still be looking at DYL</p>	
e)	<p>Issue 4866</p> <p>Submitted 7/9/2016</p> <p>Speed limit on Braydon Road</p>	PC support?	PC to send minute - close if no support.	
f)	New issues since agenda published	<p>5 metro counts requested by resident and pc of Purton. Being processed.</p> <p>5120 state of pavements in Purton</p> <p>Station road – rwb parking</p> <p>Request for lighting in bus stop at The Wiltshire, RWB</p> <p>Street name for Tockenham</p>		
7.	Other items			

COMMUNITY AREA TRANSPORT GROUP ACTION / NOTES LOG

a)		<p>Discussion on how this group works going forward.</p> <p>Anything referred to TC or PC, and no feedback will be closed.</p> <p>Freight Management discussion – Spencer Drinkwater (not discussed)</p>	<p>Need to refresh distribution list. Send out SID info. Alexa can close off any previously agreed issues. TC/PC invited to share their views on how CATG could be improved going forward.</p> <p>Vote of thanks to Bob for the huge amount of work he has done getting CATG to its current shape.</p>	
8.	Date of Next Meeting: 7th September 2017 18.30 Cricklade Town Council			

Royal Wootton Bassett and Cricklade Area Board Community Area Transport Group

Highways Officer – Steve Hind

1. Environmental & Community Implications

1.1. Environmental and community implications were considered by the CATG during their deliberations. The funding of projects will contribute to the continuance and/or improvement of environmental, social and community wellbeing in the community area, the extent and specifics of which will be dependent upon the individual project.

2. Financial Implications

2.1. All decisions must fall within the Highways funding allocated to Royal Wootton Bassett and Cricklade Area Board.
2.2. If funding is allocated in line with CATG recommendations outlined in this report, and all relevant 3rd party contributions are confirmed, Wootton Bassett and Cricklade Area Board will have a remaining Highways funding balance of **£XXXX**

3. Legal Implications

3.1. There are no specific legal implications related to this report.

COMMUNITY AREA TRANSPORT GROUP ACTION / NOTES LOG

4. HR Implications

4.1. There are no specific HR implications related to this report.

5. Equality and Inclusion Implications

5.1 The schemes recommended to the Area Board will improve road safety for all users of the highway.

6. Safeguarding implications

NOTIFICATION OF THE DESIGNATION OF BROAD TOWN NEIGHBOURHOOD AREA UNDER SECTION 61G OF THE TOWN AND COUNTRY PLANNING ACT 1990 AS AMENDED

APPLICANT:

Broad Town Parish Council

APPLICATION:

Application for the Designation of Broad Town Neighbourhood Area

An application has been received that includes a map which identifies the area to which the application relates, a supporting statement explaining why the proposed neighbourhood area is considered appropriate and a statement that the body making the application is a relevant body for the purposes of section 61G(2) of the 1990 Act.

DECISION:

The Designation of Broad Town Neighbourhood Area is approved in accordance with section 61G of the Town and Country Planning Act 1990 as amended for the purposes of Neighbourhood Planning.

The area specified in the application consists of the whole of the parish council's area. The specified area was already part of a neighbourhood area, however none of that neighbourhood area extended outside the parish council's area. Therefore, the neighbourhood area has been designated without consultation in accordance with Regulation 5A of the Neighbourhood Planning (General) Regulations 2012 as amended in 2016. Regulation 5A states amongst other things that where this regulation applies, Regulations 6 and 6A of the Neighbourhood Planning (General) Regulations 2012 as amended in 2016 do not apply.

In order to designate the Broad Town Neighbourhood Area **the name of the North East Wiltshire Villages (NEW-V) Neighbourhood Area (as originally designated on 14.05.2013 and subsequently modified¹) has been modified** in accordance with section 61G(6) of the Town and Country Planning Act 1990.

A map of the designated neighbourhood area is provided on the following page.

Pursuant to the Wiltshire Council constitution (in particular Part 3B) the Associate Director for Economic Development and Planning is authorised to designate neighbourhood areas.

¹ The NEWV neighbourhood area was designated on 14.05.2013 and has been modified on a number of occasions to remove parishes from the original designation in response to their applications to designate single-parish neighbourhood areas; 05.12.16 Purton Parish, 06.12.16 Lyneham and Bradenstoke Parish, 14.03.17 Lydiard Millicent Parish, 23.03.17 Lydiard Tregoz Parish, 12.07.17 Tockenham Parish and 13.07.17 Clyffe Pypard Parish.

I have no private interests to declare in respect of this matter which would prevent me from designating this neighbourhood area.

Signed:



Alistair Cunningham
Associate Director
Economic Development and Planning

Dated: 14.07.2017

Map of Broad Town Neighbourhood Area



NOTIFICATION OF DECISION REGARDING THE APPLICATION FOR DESIGNATION OF CLYFFE PYPARD NEIGHBOURHOOD AREA UNDER SECTION 61G OF THE TOWN AND COUNTRY PLANNING ACT 1990 AS AMENDED

APPLICANT:

Clyffe Pypard Parish Council

APPLICATION:

Application for the Designation of Clyffe Pypard Neighbourhood Area

Pursuant to the Wiltshire Council constitution and in particular Part 3B, the Associate Director for Economic Development and Planning within whose remit Spatial Planning falls is authorised to consider the area designation applications for Neighbourhood Plans and if appropriate approve applications.

DECISION:

The Designation of Clyffe Pypard Neighbourhood Area is approved in accordance with section 61G of the Town and Country Planning Act 1990 as amended for the purposes of Neighbourhood Planning. The reasons for this decision are set out in the accompanying 'Neighbourhood Area Designation Application Report'.

In order to designate the Clyffe Pypard Neighbourhood Area **the existing boundary of the North East Wiltshire Villages (NEW-V) Neighbourhood Area (as originally designated on 14.05.2013 and subsequently modified¹) has been further modified** in accordance with section 61G(6) of the Town and Country Planning Act 1990.

Signed:



Alistair Cunningham
Associate Director
Economic Development and Planning

Dated: 13.07.2017

¹ The NEWV neighbourhood area was designated on 14.05.2013 and has been modified on a number of occasions to remove parishes from the original designation in response to their applications to designate single-parish neighbourhood areas; 05.12.16 Purton Parish, 06.12.16 Lyneham and Bradenstoke Parish, 14.03.17 Lydiard Millicent Parish, 23.03.17 Lydiard Tregoz Parish, 12.07.17 Tockenham Parish.

**WILTSHIRE COUNCIL
NEIGHBOURHOOD AREA DESIGNATION APPLICATION REPORT –
OFFICERS DECISION ACTING UNDER DELEGATED POWERS**

Date of application	07.04.17
Date of decision	13.07.17
Name of proposed designation	Clyffe Pypard Neighbourhood Area
Community Area	Royal Wootton Bassett and Cricklade Community Area

1. INTRODUCTION

- 1.1 Pursuant to the Wiltshire Council constitution and in particular Part 3B, the Associate Director for Economic Development and Planning within whose remit Spatial Planning falls is authorised to consider the area designation applications for Neighbourhood Plans and if appropriate approve applications.

2. BACKGROUND

- 2.1 The power to designate a Neighbourhood Area is exercisable under section 61G of the Town and Country Planning Act 1990. Under Regulation 5(1) of The Neighbourhood Planning (General) Regulations 2012 (which came into force on 6 April 2012) an area application has to include a map which identifies the area to which the application relates, a statement explaining why this area is considered appropriate to be designated as a neighbourhood area and a statement that the body making the application is a relevant body for the purposes of section 61G(2) of the 1990 Act.
- 2.2 Clyffe Pypard Parish Council forms the ‘relevant body’ (for the purposes of section 61G (2) of the Town and Country Planning Act 1990) and submitted an application for the designation of Clyffe Pypard Neighbourhood Area. The application is for the whole parish area of Clyffe Pypard to be designated as a Neighbourhood Area for the purposes of Neighbourhood Planning and so satisfies section 61G(3) of the Act. The submission of the application complied with the regulations.

3. PROCEDURE

- 3.1 Under section 61H of the 1990 Act whenever a local planning authority exercises powers under section 61G to designate an area as a neighbourhood area, consideration must be given to whether the authority should designate the area concerned as a business area. The designation of the specified area as a business area can only occur if the authority considers that the area is wholly or predominately business in nature [Section 61H (3)].
- 3.2 If the application for the designation of this Neighbourhood Area is approved, then Regulation 7(1) of the Neighbourhood Planning (General) Regulation 2012 requires the designation to be publicised. If the application is refused, reasons must be given under 61G(9) of the 1990 Act and Regulation 7(2) of the Regulations when the decision is publicised.
- 3.3 The proposed neighbourhood area is already part of a designated neighbourhood area and since neighbourhood areas must not overlap with each other (section 61G(7) Town

and Country Planning Act 1990) a new neighbourhood area cannot be designated unless the existing neighbourhood area is modified. Under section 61G(6) Town and Country Planning Act 1990 the authority in determining any application, can modify designations already made, prior to a neighbourhood area being designated and if the modification relates to any extent to the area of a parish council it can only be made with the parish council's consent. The existing neighbourhood area that must be modified is the North East Wiltshire Villages (NEW-V) neighbourhood area (as modified), which relates to the parish council areas of Broad Town and Clyffe Pypard and these parishes must consent to the modification of the NEW-V neighbourhood area prior to the designation of Clyffe Pypard parish as a neighbourhood area. By submitting their application to have the parish of Clyffe Pypard designated as an individual neighbourhood area it is deemed that Clyffe Pypard Parish Council has already consented to the necessary modification to exclude their parish area.

- 3.4 In determining the application the local planning authority would also need to consider the desirability of maintaining the existing boundaries of areas already designated as neighbourhood areas as per section 61G(4)(b) Town and Country Planning Act 1990.

4. CONSIDERATION AS TO WHETHER OR NOT TO DESIGNATE

- 4.1 In determining the application for the designation as a Neighbourhood Area regard must be had to the desirability of designating the whole area.
- 4.2 The issue is whether or not the specified area is an appropriate area to be designated as a Neighbourhood Area² and whether or not it is appropriate to modify the existing neighbourhood area.
- 4.3 The fact that the designation of the Clyffe Pypard Neighbourhood Area would allow a Neighbourhood Plan to be prepared does not form part of the determination of this application.

5. REASONING FOR DESIGNATION

- 5.1 The proposed area for designation is Clyffe Pypard Parish as a single parish neighbourhood area as set out in the map included with the application. The Parish of Clyffe Pypard is situated in North-East Wiltshire, with the town of Royal Wootton Bassett to the north, and other adjoining parishes of Broad Town, Broad Hinton, Winterbourne Bassett, Berwick Bassett, Hilmarton, Lyneham and Bradenstoke and Tockenham.
- 5.2 Clyffe Pypard parish is rural in nature and includes the hamlets of Clyffe Pypard and Bushton and farms within open countryside. The parish is partly within the North Wessex Downs AONB. The parish is not wholly or predominantly business in nature.
- 5.3 The application states that Clyffe Pypard is a logical planning unit and an appropriate democratic unit for the purposes of facilitating a neighbourhood planning process.
- 5.4 The whole area of the Parish of Clyffe Pypard may be considered an appropriate area to be designated as a neighbourhood plan area.

² Paragraph 033 Reference ID: 41-033-20140306

- 5.5 However, Clyffe Pypard Parish is already designated as part of a neighbourhood area: it is one of two parishes making up the joint 'North East Wiltshire Villages Neighbourhood Area' (NEW-V) as modified. The desirability of maintaining the boundaries of the existing neighbourhood area designation must also be considered. The designation of Clyffe Pypard neighbourhood area would result in Broad Town parish being the sole remaining parish in the North East Wiltshire Villages ('NEW-V') neighbourhood area that was set up as a multiple-parish neighbourhood area. The NEW-V neighbourhood area boundary is no longer considered practicable and there is no desire to maintain the existing boundary. It is therefore proposed that the NEW-V neighbourhood area, as originally designated on 14 May 2013 and subsequently modified, should be further modified to accommodate the designation of Clyffe Pypard parish as a single-parish neighbourhood area. Broad Town Parish Council has given their consent to modify the NEW-V neighbourhood area, and has also submitted an application to have their parish designated as a single-parish neighbourhood area.
- 5.6 The resulting NEW-V neighbourhood area (consisting of the single parish of Broad Town), is considered a valid planning unit.
- 5.7 The areas proposed for designation as Clyffe Pypard Neighbourhood Area and the area proposed as the modified NEW-V neighbourhood area fall completely within the Council's area.
- 5.8 The application for designation of Clyffe Pypard Neighbourhood Area was publicised for a period of 6 weeks and 2 days from 9am Monday 8 May until 5pm Wednesday 21 June 2017.
- 5.9 Three responses were received within the consultation period, which are in support of the designation and are set out at Appendix 1.

6. CONCLUSION

- 6.1 The reasons set out above and the results of the consultation lend support to the designation of Clyffe Pypard Neighbourhood Area. It is considered that the specified area (the subject of the application, as shown on the submitted map) is an 'appropriate area' upon which to base a Neighbourhood Plan. The existing NEW-V neighbourhood area has been modified, after consent of the relevant parish councils, to accommodate designation of Clyffe Pypard Neighbourhood Area.
- 6.2 The specified area is not wholly or predominantly business in nature and so it is inappropriate to designate it as a business area.
- 6.3 A copy of this report will be sent to the qualifying body, Clyffe Pypard Parish Council, and the remaining parish that the NEW-V neighbourhood area relates to and will be publicised according to the regulations.

7. DECISION

- 7.1 **The Designation of the Clyffe Pypard Neighbourhood Area is approved** in accordance with section 61G of the Town and Country Planning Act 1990 as amended for the purposes of Neighbourhood Planning.

7.2 In designating the Clyffe Pypard Neighbourhood Area **the existing boundary of the North East Wiltshire Villages (NEW-V) Neighbourhood Area (as originally designated on 14.05.2013 and subsequently modified³)**, has been further modified in accordance with section 61G(6) of the Town and Country Planning Act 1990.



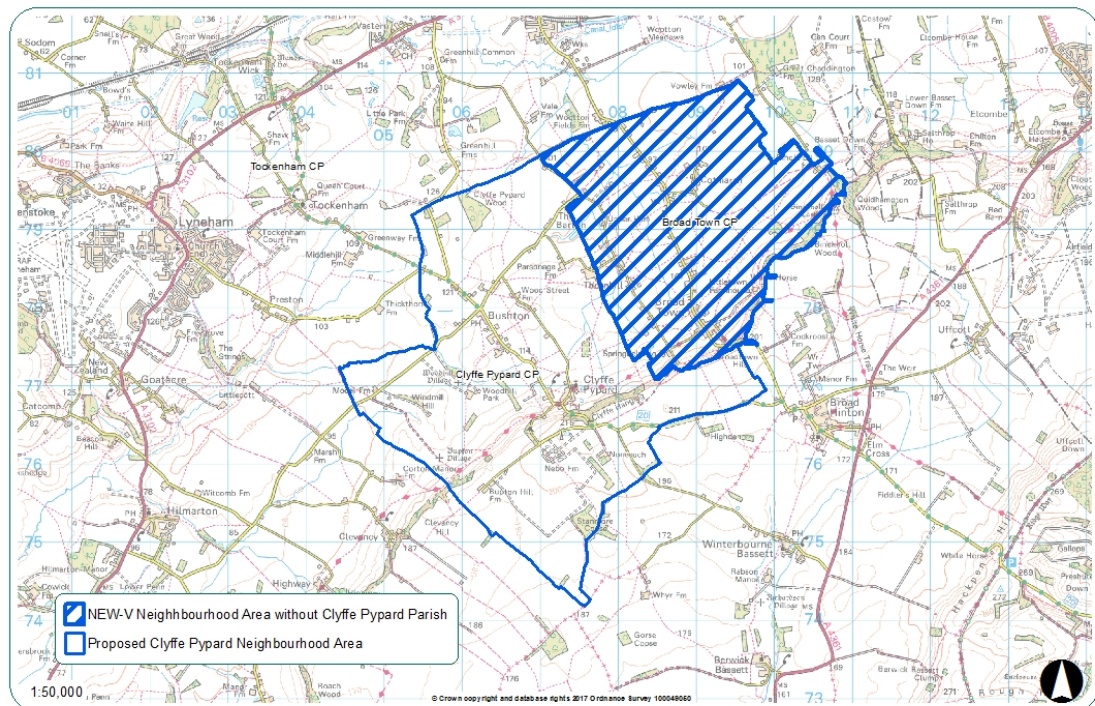
Alistair Cunningham
Associate Director
Economic Development and Planning Services

Dated: 13.07.2017

³ The NEWV neighbourhood area was designated on 14.05.2013 and has been modified on a number of occasions to remove parishes from the original designation in response to their applications to designate single-parish neighbourhood areas; 05.12.16 Purton Parish, 06.12.16 Lyneham and Bradenstoke Parish, 14.03.17 Lydiard Millicent Parish, 23.03.17 Lydiard Tregoz Parish and 12.07.17 Tockenham Parish.

DECISION REGARDING THE APPLICATION FOR DESIGNATION OF CLYFFE PYPARD NEIGHBOURHOOD AREA UNDER SECTION 61(G) OF THE TOWN AND COUNTRY PLANNING ACT (AS AMENDED)

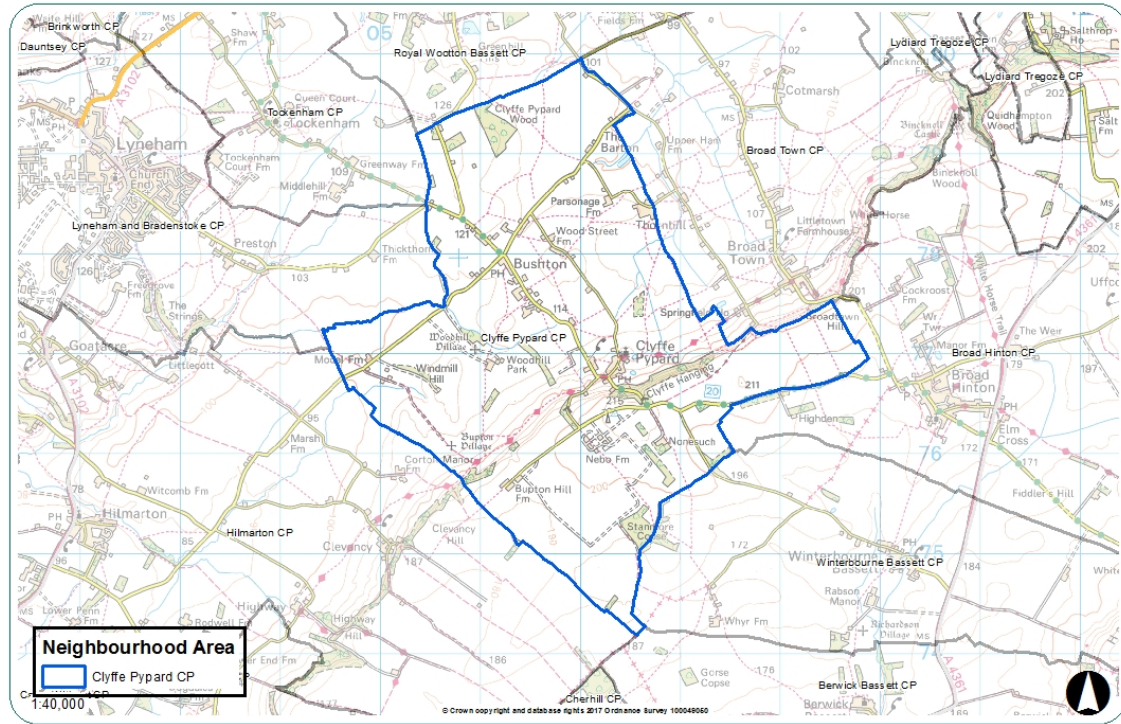
1. I have no private interests to declare in respect of this matter which would prevent me from determining this application.
2. I hereby exercise power under section 61G of the Town and Country Planning Act 1990 (as amended) (“the Act”) and all other powers delegated to me to modify the boundary of the North East Wiltshire Villages (“NEW-V”) Neighbourhood Plan to exclude the parish of Clyffe Pypard and include the parish of Broad Town, as shown on Plan A. I am satisfied that it is appropriate to modify the neighbourhood area as shown on Plan A, and I confirm that consent was received from each parish council to which the modification relates.
 - a) Name of neighbourhood area: NEW-V Neighbourhood Area
 - b) Plan A: Map of the NEW-V Neighbourhood Area, as modified 13.07.17



- c) I have made this decision in line with the information set out in the ‘Neighbourhood Area Designation Application Report’.
3. I hereby exercise power under section 61G of the Town and Country Planning Act 1990 (as amended) (“the Act”) and all other powers delegated to me to designate the area identified on the map below as the Clyffe Pypard Neighbourhood Area for the purposes of section 61G (1) of the Act as I am satisfied that the area is an appropriate area to be designated as a neighbourhood area. I do not designate it as a business area for the purposes of section 61H (1) of the Act as it is not wholly or predominately business in nature.

- a) Name of neighbourhood area: Clyffe Pypard Neighbourhood Area
- b) Plan B: Map of the Clyffe Pypard Neighbourhood Area

Clyffe Pypard Neighbourhood Area



- c) I have made this decision in line with the information set out in the 'Neighbourhood Area Designation Application Report'.

Signed:

Alistair Cunningham
Associate Director
Economic Development and Planning
Date: 13.07.17

Appendix 1: Responses submitted to Wiltshire Council during the consultation on the application for designation of Clyffe Pypard Neighbourhood Area

The full representations and any attachments can also be viewed online at http://consult.wiltshire.gov.uk/portal/spatial_planning/np/clyffepypard_npdesig

Respondent	Comments
Comments	
Purton Parish Council (Ms Deborah Lawrence)	At the full Council meeting held on Monday 8 th May 2017, Purton Parish Council considered the application above and proposed full support in the redesignation.
Purton Parish Council (Ms Deborah Lawrence)	At the Parish Council meeting held on Monday 12 th June 2017 Purton Parish Council supported the application for Clyffe Pypard area designation.
Cllr Alison Bucknell	<p>I am the Wiltshire Councillor for Lyneham Division which includes Clyffe Pypard.</p> <p>I am happy to support this area designation.</p>

NOTIFICATION OF DECISION REGARDING THE APPLICATION FOR DESIGNATION OF TOCKENHAM NEIGHBOURHOOD AREA UNDER SECTION 61G OF THE TOWN AND COUNTRY PLANNING ACT 1990 AS AMENDED

APPLICANT:

Tockenham Parish Council

APPLICATION:

Application for the Designation of Tockenham Neighbourhood Area

Pursuant to the Wiltshire Council constitution and in particular Part 3B, the Associate Director for Economic Development and Planning within whose remit Spatial Planning falls is authorised to consider the area designation applications for Neighbourhood Plans and if appropriate approve applications.

DECISION:

The Designation of Tockenham Neighbourhood Area is approved in accordance with section 61G of the Town and Country Planning Act 1990 as amended for the purposes of Neighbourhood Planning. The reasons for this decision are set out in the accompanying 'Neighbourhood Area Designation Application Report'.

In order to designate the Tockenham Neighbourhood Area **the existing boundary of the North East Wiltshire Villages (NEW-V) Neighbourhood Area (as originally designated on 14.05.2013 and subsequently modified¹) has been further modified** in accordance with section 61G(6) of the Town and Country Planning Act 1990.

Signed:



Alistair Cunningham
Associate Director
Economic Development and Planning

Dated: 12.07.2017

¹ The NEWV neighbourhood area was designated on 14.05.2013 and has been modified on a number of occasions to remove parishes from the original designation in response to their applications to designate single-parish neighbourhood areas; 05.12.16 Purton Parish, 06.12.16 Lyneham and Bradenstoke Parish, 14.03.17 Lydiard Millicent Parish and 23.03.17 Lydiard Tregoz Parish.

**WILTSHIRE COUNCIL
NEIGHBOURHOOD AREA DESIGNATION APPLICATION REPORT –
OFFICERS DECISION ACTING UNDER DELEGATED POWERS**

Date of application	20.03.17
Date of decision	12.07.17
Name of proposed designation	Tockenham Neighbourhood Area
Community Area	Royal Wootton Bassett and Cricklade Community Area

1. INTRODUCTION

- 1.1 Pursuant to the Wiltshire Council constitution and in particular Part 3B, the Associate Director for Economic Development and Planning within whose remit Spatial Planning falls is authorised to consider the area designation applications for Neighbourhood Plans and if appropriate approve applications.

2. BACKGROUND

- 2.1 The power to designate a Neighbourhood Area is exercisable under section 61G of the Town and Country Planning Act 1990. Under Regulation 5(1) of The Neighbourhood Planning (General) Regulations 2012 (which came into force on 6 April 2012) an area application has to include a map which identifies the area to which the application relates, a statement explaining why this area is considered appropriate to be designated as a neighbourhood area and a statement that the body making the application is a relevant body for the purposes of section 61G(2) of the 1990 Act.
- 2.2 Tockenham Parish Council forms the ‘relevant body’ (for the purposes of section 61G (2) of the Town and Country Planning Act 1990) and submitted an application for the designation of Tockenham Neighbourhood Area. The application is for the whole parish area of Tockenham to be designated as a Neighbourhood Area for the purposes of Neighbourhood Planning and so satisfies section 61G(3) of the Act. The submission of the application complied with the regulations.

3. PROCEDURE

- 3.1 Under section 61H of the 1990 Act whenever a local planning authority exercises powers under section 61G to designate an area as a neighbourhood area, consideration must be given to whether the authority should designate the area concerned as a business area. The designation of the specified area as a business area can only occur if the authority considers that the area is wholly or predominately business in nature [Section 61H (3)].
- 3.2 If the application for the designation of this Neighbourhood Area is approved, then Regulation 7(1) of the Neighbourhood Planning (General) Regulation 2012 requires the designation to be publicised. If the application is refused, reasons must be given under 61G(9) of the 1990 Act and Regulation 7(2) of the Regulations when the decision is publicised.
- 3.3 The proposed neighbourhood area is already part of a designated neighbourhood area and since neighbourhood areas must not overlap with each other (section 61G(7) Town and Country Planning Act 1990) a new neighbourhood area cannot be designated unless the existing neighbourhood area is modified. Under section 61G(6) Town and Country

Planning Act 1990 the authority in determining any application, can modify designations already made, prior to a neighbourhood area being designated and if the modification relates to any extent to the area of a parish council it can only be made with the parish council's consent. The existing neighbourhood area that must be modified is the North East Wiltshire Villages (NEW-V) neighbourhood area (as modified), which relates to the parish council areas of Broad Town, Clyffe Pypard and Tockenham and these parishes must consent to the modification of the NEW-V neighbourhood area prior to the designation of Tockenham parish as a neighbourhood area. By submitting their application to have the parish of Tockenham designated as an individual neighbourhood area it is deemed that Tockenham Parish Council has already consented to the necessary modification to exclude their parish area.

- 3.4 In determining the application the local planning authority would also need to consider the desirability of maintaining the existing boundaries of areas already designated as neighbourhood areas as per section 61G(4)(b) Town and Country Planning Act 1990.

4. CONSIDERATION AS TO WHETHER OR NOT TO DESIGNATE

- 4.1 In determining the application for the designation as a Neighbourhood Area regard must be had to the desirability of designating the whole area.
- 4.2 The issue is whether or not the specified area is an appropriate area to be designated as a Neighbourhood Area² and whether or not it is appropriate to modify the existing neighbourhood area.
- 4.3 The fact that the designation of the Tockenham Neighbourhood Area would allow a Neighbourhood Plan to be prepared does not form part of the determination of this application.

5. REASONING FOR DESIGNATION

- 5.1 The proposed area for designation is Tockenham Parish as a single parish neighbourhood area as set out in the map included with the application. The Parish of Tockenham is situated in North-East Wiltshire, with the town of Royal Wootton Bassett to the north east, the rural parish of Clyffe Pypard to the south east and the village of Lyneham to the west.
- 5.2 Tockenham parish is rural in nature. It includes the small settlement of Tockenham (outside the settlement hierarchy in the Wiltshire Core Strategy) with associated hamlets and farms, all lying within the surrounding open countryside. The village of Tockenham has a very active community focused on the village hall, church and play area for activities. Agricultural linked businesses are most prevalent in the area. The parish is not wholly or predominantly business in nature.
- 5.3 The application indicates that designation of Tockenham Parish as a neighbourhood area would allow for the community to consider additional housing to meet local needs and preserve the character and identity of the parish.
- 5.4 As such the whole area of the Parish of Tockenham may be considered an appropriate area to be designated as a neighbourhood plan area.

² Paragraph 033 Reference ID: 41-033-20140306

- 5.5 However, Tockenham Parish is already designated as part of a neighbourhood area: it is one of three parishes making up the joint 'North East Wiltshire Villages Neighbourhood Area' (NEW-V) as modified. The desirability of maintaining the boundaries of the existing neighbourhood area designation must also be considered. The application states that the NEW-V neighbourhood area boundary is no longer considered practicable as originally conceived. It is therefore not considered desirable to maintain the boundaries of the NEW-V neighbourhood area designation. All parish councils have given their consent. It is therefore proposed that the NEW-V neighbourhood area, as originally designated on 14 May 2013 and subsequently modified, is further modified to enable the neighbourhood area designation of Tockenham Parish.
- 5.6 The resulting NEW-V neighbourhood area (consisting of the parish areas of Broad Town and Clyffe Pypard), is considered a valid planning unit as the remaining parishes share common characteristics and contain smaller rural settlements looking for limited development according to the needs of their communities. The exclusion of Tockenham Parish does not fragment the settlements or inhibit the remaining parishes to pursue their own neighbourhood development plan.
- 5.7 The areas proposed for designation as Tockenham Neighbourhood Area and the area proposed as the modified NEW-V neighbourhood area fall completely within the Council's area.
- 5.8 The application for designation of Tockenham Neighbourhood Area was publicised for a period of 6 weeks and 2 days from 9am Friday 7 April until 5pm Monday 22 May 2017.
- 5.9 Four responses were received within the consultation period, which raise no objection to the designation. One comment was in support of the designation and the other comments were about the neighbourhood plan process in more general terms. All responses will be forwarded to Tockenham Parish Council. These are set out at Appendix 1.

6. CONCLUSION

- 6.1 The reasons set out above and the results of the consultation lend support to the designation of Tockenham Neighbourhood Area. It is considered that the specified area (the subject of the application, as shown on the submitted map) is an 'appropriate area' upon which to base a Neighbourhood Plan. The existing NEW-V neighbourhood area has been modified, after consent of the relevant parish councils, to accommodate designation of Tockenham Neighbourhood Area.
- 6.2 The specified area is not wholly or predominantly business in nature and so it is inappropriate to designate it as a business area.
- 6.3 A copy of this report will be sent to the qualifying body, Tockenham Parish Council and all the parishes that the NEW-V neighbourhood area relates to and will be publicised according to the regulations.

7. DECISION

- 7.1 **The Designation of the Tockenham Neighbourhood Area is approved** in accordance with section 61G of the Town and Country Planning Act 1990 as amended for the purposes of Neighbourhood Planning.

7.2 In designating the Tockenham Neighbourhood Area **the existing boundary of the North East Wiltshire Villages (NEW-V) Neighbourhood Area (as originally designated on 14.05.2013 and subsequently modified³)**, has been further modified in accordance with section 61G(6) of the Town and Country Planning Act 1990.

Signed:

A handwritten signature in black ink, appearing to read 'Alistair Cunningham', written over a light grey rectangular background.

Alistair Cunningham
Associate Director
Economic Development and Planning Services

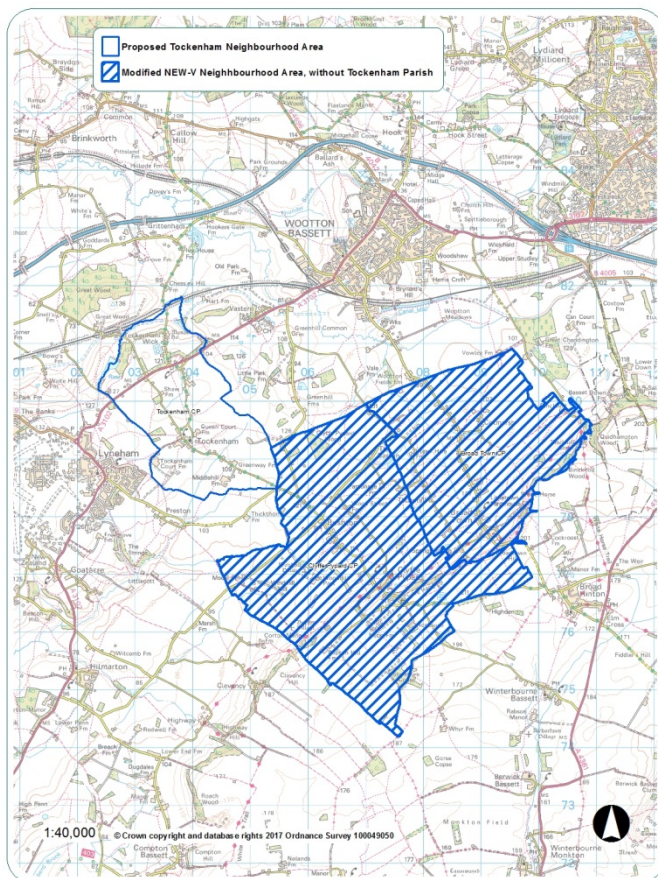
Dated: 12.07.2017

³ The NEWV neighbourhood area was designated on 14.05.2013 and has been modified on a number of occasions to remove parishes from the original designation in response to their applications to designate single-parish neighbourhood areas; 05.12.16 Purton Parish, 06.12.16 Lyneham and Bradenstoke Parish, 14.03.17 Lydiard Millicent Parish and 23.03.17 Lydiard Tregoz Parish.

DECISION REGARDING THE APPLICATION FOR DESIGNATION OF TOCKENHAM NEIGHBOURHOOD AREA UNDER SECTION 61(G) OF THE TOWN AND COUNTRY PLANNING ACT (AS AMENDED)

1. I have no private interests to declare in respect of this matter which would prevent me from determining this application.
2. I hereby exercise power under section 61G of the Town and Country Planning Act 1990 (as amended) (“the Act”) and all other powers delegated to me to modify the boundary of the North East Wiltshire Villages (“NEW-V”) Neighbourhood Plan to exclude the parish of Tockenham and include the parishes of Broad Town and Clyffe Pypard, as shown on Plan A. I am satisfied that it is appropriate to modify the neighbourhood area as shown on Plan A, and I confirm that consent was received from each parish council to which the modification relates.
 - a) Name of neighbourhood area: NEW-V Neighbourhood Area
 - b) Plan A: Map of the NEW-V Neighbourhood Area, as modified 12.07.2017

Wiltshire Council
Where everybody matters

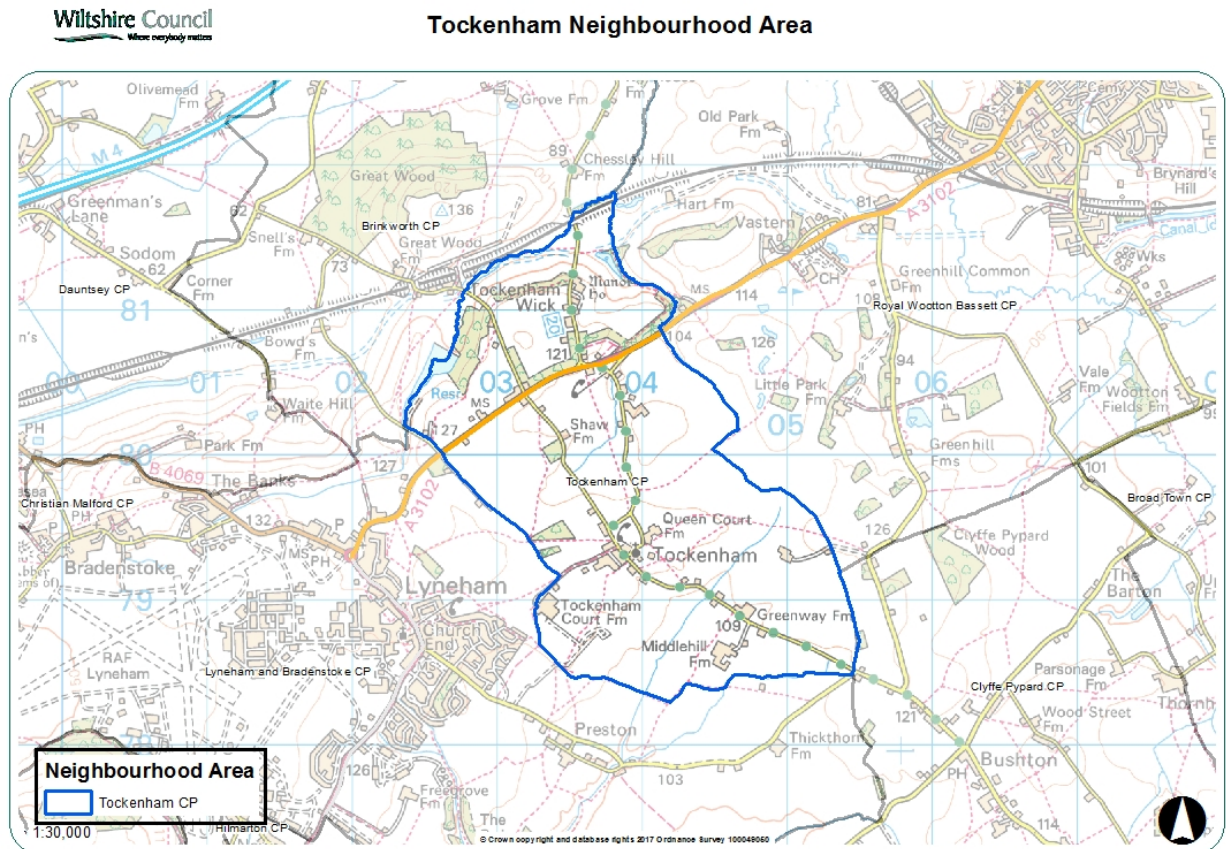


- c) I have made this decision in line with the information set out in the ‘Neighbourhood Area Designation Application Report’.

3. I hereby exercise power under section 61G of the Town and Country Planning Act 1990 (as amended) ("the Act") and all other powers delegated to me to designate the area identified on the map below as the Tockenham Neighbourhood Area for the purposes of section 61G (1) of the Act as I am satisfied that the area is an appropriate area to be designated as a neighbourhood area. I do not designate it as a business area for the purposes of section 61H (1) of the Act as it is not wholly or predominately business in nature.

a) Name of neighbourhood area: Tockenham Neighbourhood Area

b) Plan B: Map of the Tockenham Neighbourhood Area



c) I have made this decision in line with the information set out in the 'Neighbourhood Area Designation Application Report'.

Signed:

Alistair Cunningham
Associate Director
Economic Development and Planning
Date: 12.07.2017

Appendix 1: Responses submitted to Wiltshire Council during the consultation on the application for designation of Tockenham Neighbourhood Area

The full representations and any attachments can also be viewed online at http://consult.wiltshire.gov.uk/portal/spatial_planning/np/tockenham_npdesig

Respondent	Comments
Mr Tom Horwitz	<p style="text-align: center;">Comments</p> <p>The issue/ problem I have with Tockenham's plan (whether it's a part of NEW-V or not) is about how it uses the word 'development'. There are two parts to my comments.</p> <p>First, the word 'development' is ambiguous and means different thing to different people. It could be open to some wildly differing interpretations. At one end, the phrase 'a limited amount of development' could mean in-fill by local people, or a single new home built here and there. Development of this kind is what I take is the intention of the people in Tockenham. Certainly not a multi-property development plan where a developer builds 10 houses in one building site.</p> <p>However, to state that more than 70% of the people in Tockenham want a limited amount of development' can be stretched something beyond what was intended. That almost reads as an invitation for developers (or the county for that matter) to see Tockenham as a development friendly community that would welcome many new houses, or even a builder coming in to build a small housing estate.</p> <p>It is not difficult to read that statement as an endorsement for a developer to plan to build a handful of new homes (perhaps 1 or 2). Or, it could be a small number of homes in a greenfield or brownfield site that a builder proposes (e.g. 5 houses). Both of these examples might be fine. However could it mean perhaps 10 to 20 homes built over an extended period of time (10 to 15 years) – a new housing estate? The word 'development' can be used to justify many different situations.</p> <p>My point is that should be much more specific as to what we want, and not accept open, or unclear terms. Nor should we just leave it to Wiltshire's overarching plan to act in our best interests. This document will need to be able to stand on its own, and should not be ambiguous. If left unclear, developers or indeed the Council itself years from now could read or twist it to mean something different than what the people of Tockenham actually want. We should tighten up the language so that it's not open to selective interpretation. Years from now, people who have no association or connection to Tockenham need to be able to fully understand what we want, with no confusion.</p> <p>This is now even more important given we're no longer going to be part of NEW-V. Before, when we were part of a wider group, a collection of voices could address this issue. Now we're going it alone so need to cover what I feel is an open issue.</p> <p>I may be cynical, but I suspect the Council and their advisors would prefer a free hand and don't want us to be definitive. We should not defer to advice from those with a vested interest, who would perhaps prefer that no restrictions are placed in their way.</p> <p>My second, and bigger, issue with Tockenham's plan is that says very little about infrastructure in and around Tockenham. We need to concern ourselves not only with the parish, but developments around Tockenham as well. For example, we have an A road passing through the parish. Development in Lyneham will affect</p>

	<p>Tockenham – the added traffic impacts us. This is just an example. But any ‘development’ in the surrounding area will result in increased demands on schools, pharmacies, doctor’s clinics, water, sewage, police, parks and playgrounds, etc. The impact goes beyond the local area (within 5 miles of Tockenham). Access to the M4 is already poor during rush hour, and any new development, without improving infrastructure, will adversely affect Tockenham. Our plan should address these needs.</p> <p>Again, as we're now not part of a wider group, it is now more important that we cover this off.</p> <p>Evidence was to why this is critical is easy to find. In the last 10 years, within 5 miles of Tockenham, there have been several new homes/ developments built. In that time I have seen very little done to handle the added traffic and infrastructure demands (on roads, utilities, schools, clinics, shops, etc.) that these new homes have put on the local area. We should not leave it to others to make sure the impact on Tockenham is considered. Plus, given what I perceive is very little ‘investment’ in infrastructure from the developments that have been built, it is naive to assume that any very real impact upon Tockenham will be taken into account in future. Evidence contradicts that assertion.</p> <p>I realise infrastructure costs are not cheap, and economic realities need to be considered, yet to ignore this impact in a document that is supposed to be a plan for the future is a glaring omission. We don’t need cover all contingencies, just that we want to make sure that thorough planning reflecting wider communities needs are considered, and that Tockenham wants those issues dealt with and not simply ignored or tabled for later.</p> <p>Given this history (several major developments within 5 miles of Tockenham that have had an impact with little being done to improving infrastructure) my trust level is low, and I feel strongly that we need to protect our interests. Local government hasn’t acted to fully address these issues, and we should hold them to account.</p> <p>A comprehensive and complete plan should cover these factors. This plan should include comments about protecting Tockenham’s interests concerning development in Tockenham, but from development in the surrounding area as well.</p>
<p>Cllr Allison Bucknell</p>	<p>I am happy to support this application. The village has been part of NEW-V for many years and indeed took the lead for the past 15 months. It is unfortunate that this has come to nothing, the village needs to move forward now and this is the best way to do this.</p>
<p>Ms Andi Witcombe (National Farmers Union)</p>	<p>The South West National Farmers Union (NFU) welcomes the opportunity to comment on the Tockenham Neighbourhood Area Application. The South West NFU represents approximately 10,000 Farmers and Growers across the South West region and over 50,000 farmers and growers nationally. In Wiltshire we represent over 800 farmers and landowners. The NFU, and its members, recognise the importance of the neighbourhood and overall are supportive of the approach given. Our response is as below along with some key priorities.</p> <p>As you will be aware the farming community continues to face formidable challenges with increasing regulation, volatile markets and fluctuating farming returns. In response to these challenges farmers have had to consider the resources available to them and look at new ways of developing their businesses</p>

so that they can grow and remain competitive. This might include the need for modern agricultural buildings either to meet regulations or to change the use of existing buildings in order to respond to changing market demand, for example.

Our members in Tockenham are no exception and given that the area is largely farmed it is clear that any form of Neighbourhood Plan must adequately address the issues and opportunities of farming. Our vision for the area is:

Tockenham is a sustainable rural community that is underpinned by an innovative rural economy and thriving farming and food industry, which is profitable and supports viable livelihoods, underpins sustainable and healthier communities and enhances the environmental assets that are vital to the counties prosperity.

For the farming community this vision is to be achieved by the following themes

1. Strengthening our farming businesses to help them build profitability and respond to new opportunities
2. To create thriving localities which meet the needs of their communities, businesses and their environment.
3. Realising the value of the region's environmental assets

In addition we would see some of the key priorities for farms to include (not in order of priority):

1. The ability for the next generation to take on management of farms and to support this through the provision of affordable housing to allow succession.
2. Develop farming enterprises that can meet the challenges of food security and compliance through modernising and becoming more efficient
3. Diversifying farming enterprises to meet new opportunities such as, *inter alia* , business units or tourism.
4. Developing renewable energy which meets the needs of the farm and are appropriate to the location and renewable resources available.
5. Access to high speed broadband.

Food production is a key priority for economic growth both nationally but also importantly in a rural area such as Tockenham. In the Government white paper '*Local Growth: realising every place's potential*' the Coalition Government makes clear that the first priority " *is to return the nation's economy to health*". This includes creating, "*the conditions that will help business and gets the economy growing*" and this includes the support for farming enterprises so vital to the rural economy and enabling them to remain viable through diversified enterprises. We would expect that any proposals for developing farms will take this into account.

Diversification is in line with National Planning Policy Framework (NPPF) that provides that local authorities should support development that enables farmers to become more competitive and sustainable and diversify into new opportunities. A key message within the NPPF is the need for economic growth. " *A positive planning system is essential, because without growth, a sustainable future cannot be achieved. Therefore, significant weight should be placed on the need to support economic growth through the planning system...the default answer to development proposals is yes.*" Tockenham neighbourhood plan has the

	<p>opportunity to help support farms diversify and create new employment and income opportunities for the area. These could range from the provision of business units through to farm shops for example.</p> <p>In the NPPF the government makes a number of very important statements related to this the development of renewable energy. Paragraphs 95 to 98 make a number key points including: <i>'local planning authorities should recognise the responsibility on all communities to contribute to energy generation from renewable or low carbon sources'</i> (para 97); <i>'have a positive strategy to promote energy from renewable and low carbon sources'</i> which <i>'maximise renewable and low carbon energy sources'</i>. Renewable energy represents an important opportunity for farms to reduce their energy bills and also to create revenue that can help support farming activity. We understand that this can be a contentious issue within communities as has been highlighted by the government with the policy it has introduced for requiring areas to be identified for wind development in local or neighbourhood plans such as yours. Some of our members may be looking to erect wind turbines for electricity to be used on farm at a very small scale. We ask that you consider the issue of scale and how you can support your local farmers.</p> <p>Succession within farming businesses is often critical to their ongoing sustainability. This will often require the need for additional housing to enable the next generation to take over the farming enterprise and to allow the current generation to take a less involved role – or to assist employment of key staff. We ask that the neighbourhood plan supports farms to build new housing.</p> <p>To help guide any work we have developed some principles which we believe will help Tockenham Parish shape activity in the area. These are:</p> <ul style="list-style-type: none"> • Farmers and landowners should always be consulted and listened to with regard to developing the area. • Food security is a crucial issue for now and the future and any actions must ensure that we do not compromise our ability to feed ourselves. • We should look to increase farm productivity and decrease impact on the environment. • The achievement of sustainable development in rural areas through the integration of environmental, social and economic objectives. • Meet the needs of a diverse rural population and ensure equality of opportunity. • Maintain and enhance the areas natural asset base. • Farmers and landowners should always be consulted and listened to with regard to developing the area. • Support sustainable growth in the rural economy. • Sustainable farming will support the wider community. • Not one system of farming is the answer and all should be supported for maximum benefit to society and the environment • Encourage links between rural areas and urban centres. <p>Many thanks for the opportunity to respond to this consultation and we hope that these comments are helpful and will be taken into account as the Plan is developed.</p>
Mr Richard Agnew (Gladman Developments)	Please see letter inserted below

Gladman House, Alexandria Way
Congleton Business Park
Congleton, Cheshire
CW12 1LB

T: 01260 288800
F: 01260 288801

www.gladman.co.uk

Spatial Planning
Economic Development and Planning
County Hall
Bythesea Road
Trowbridge
Wiltshire
BA14 8JN

By e-mail only to: neighbourhood.planning@wiltshire.gov.uk

RE: Tockenham Neighbourhood Area Designation Consultation

Gladman Developments Ltd (Gladman) specialise in the promotion of strategic land for residential development with associated community infrastructure. This letter provides Gladman's representations on the application made by Tockenham Parish Council for the designation of a neighbourhood area, for the purposes of preparing a neighbourhood development plan.

As this is the first formal stage of preparing a neighbourhood plan, Gladman would like to take this opportunity to comment on the Tockenham Neighbourhood Area application to highlight a number of key requirements to which the development of the emerging neighbourhood area should have regard.

Legislation

Before a Neighbourhood Plan can proceed to referendum it must be tested against a set of Neighbourhood Plan Basic Conditions, set out in §8(2) of Schedule 4B of the Town and Country Planning Act 1990 (as amended by section 28a of the Planning and Compulsory Purchase Act 2004). The Basic Conditions which the Neighbourhood Plan must be found in compliance with are as follows:

- a) *Having regard to national policies and advice contained in guidance issued by the Secretary of State it is appropriate to make the neighbourhood plan*
- b) *The making of the neighbourhood plan contributes to the achievement of sustainable development*
- c) *The making of the neighbourhood plan is in general conformity with the strategic policies contained within the development plan for the area of the authority*
- d) *The making of the neighbourhood plan does not breach, and is otherwise compatible with, EU obligations*

If the Neighbourhood Plan is not developed in accordance with all of the Neighbourhood Plan Basic Conditions as set out above then there is a real risk that it will fail when it reaches Independent Examination.

Crownhall Judgment

On 21st January 2016, Holgate J handed down judgment in *R(Crownhall Estates Ltd) v Chichester District Council* [2016] EWHC 73 (Admin). This judgment summarises the respective legislation at §12-§28 (further detailed below), and the relevant principles at §29.

This judgment does not however mark the end of policy development, on 11th February 2016, the Secretary of State published a series of updates to the Neighbourhood Planning chapter of the Planning Practice Guidance (PPG). In particular, the PPG now stresses the importance of housing reserve sites and providing indicative delivery timetables to ensure that emerging evidence of housing needs is addressed to help minimise any potential conflicts that can arise to ensure that a neighbourhood plan is not ultimately overridden by the contents of an emerging Local Plan.

It is important to note that the updates to the PPG were drafted following the Crownhall judgment and it is essential that the Parish Council consider all of the advice and guidance contained in the PPG.

National Planning Policy Framework

The National Planning Policy Framework (the Framework) sets out the Government's planning policies for England and how these are expected to be applied. In doing so it sets out the requirements for the preparation of Neighbourhood Plans and the role they must play in meeting the development needs of the local area in which they control.

Paragraph 16 of the Framework sets out the positive role that Neighbourhood Plans should play in meeting the development needs of the local area. It states that:

"The application of the Presumption (In Favour of Sustainable Development, set out in paragraph 14 of Framework) will have implications for how communities engage in neighbourhood planning. Critically it will mean that neighbourhoods should:

- *Develop plans that support the strategic development needs set out in Local Plans, including policies for housing and economic development;*
- *Plan positively to support local development, shaping and directing development in their area that is outside of the strategic elements of the Local Plan"*

Further guidance on the relationship between Neighbourhood Plans and strategic policies for the wider area set out in a Council's Local Plan is included in paragraph 184 of the Framework:

"The ambition of the neighbourhood should be aligned with the strategic needs and priorities of the wider local area. Neighbourhood Plans must be in general conformity with the strategic policies of the Local Plan. To facilitate this, local planning authorities should set out clearly their strategic policies for the area and ensure that an up-to-date plan is in place as quickly as possible. Neighbourhood Plans should reflect these policies and neighbourhoods should plan positively to support them. Neighbourhood Plans...should not promote less development than set out in the Local Plan or undermine its strategic policies".

It is clear from the above that neighbourhood plans should be prepared in conformity with the strategic requirements for the wider area as confirmed in an adopted Development Plan. As highlighted above, on 11th February 2016, the Secretary of State published a series of updates to the PPG for the preparation of neighbourhood plans. This update makes clear that neighbourhood plans should take account of the latest and up-to-date evidence of housing needs. Where a qualifying body is attempting to identify and meet housing needs, a local planning authority should share relevant evidence on housing need gathered to support its own plan making.

Neighbourhood Plans should also provide indicative delivery timetables and consider the allocation of reserve sites to ensure that emerging evidence of housing need is addressed in order to help minimise any potential conflicts where a post Framework Local Plan is yet to be adopted.

A further update to the PPG was published on 19th May 2016. Paragraph 50 of the PPG¹ makes clear that all settlements have a role to play in delivering sustainable development and should avoid blanket policies restricting housing development. Accordingly, the neighbourhood plan should not include policies that would act to arbitrarily preclude the delivery of sustainable development coming forward within the neighbourhood area.

¹ PPG Reference ID 50-001-20160519

Relationship with Local Plans

To meet the requirements of the Framework and the Neighbourhood Plan Basic Conditions, Neighbourhood Plans should be prepared to conform to up-to-date strategic policy requirements set out in Local Plans. Where an up-to-date Local Plan has been adopted and is in place for the wider authority area, it is the strategic policy requirements set out in this document that a Neighbourhood Plan should seek to support and meet. When a Local Plan is emerging or is yet to be found sound at Examination, there will be lack of certainty over what scale of development a community must accommodate or the direction the policies in the Neighbourhood Plan should take.

Adopted Local Plan

The adopted Development Plan relevant to the preparation of the Tockenham Neighbourhood Plan is the adopted Wiltshire Core Strategy, adopted January 2015. The plan covers the period from 2006 to 2026 and provides the overarching spatial strategy for the Wiltshire District. This plan is soon expected to be subject to a Partial Review, with the Council having previously consulted on the scope of this review, and as the scope is still unknown it is important that the Tockenham Neighbourhood Plan policies are drafted as flexibly as possible. Failure to provide sufficient flexibility could lead to conflict with the Local Plan Partial Review and elements of the Tockenham Neighbourhood Plan superseded, as Section 38(5) of the Planning and Compulsory Purchase Act 2004 states:

'If to any extent a policy contained in a development plan for an area conflicts with another policy in the development plan the conflict must be resolved in favour of the policy which is contained in the last document to be adopted, approved or published (as the case may be).'

Neighbourhood Plan Policies and Proposals

In accordance with the Neighbourhood Plan Basic Conditions, Neighbourhood Plan policies should align with the requirements of the Framework and the wider strategic policies for the area set out in the Council's Local Plan. Neighbourhood Plans should provide a policy framework that complements and supports the requirements set out in these higher-order documents, setting out further, locally-specific requirements that will be applied to development proposals coming forward.

The Framework is clear that Neighbourhood Plans cannot introduce policies and proposals that would prevent development from going ahead. They are required to plan positively for new development, enabling sufficient growth to take place to meet the strategic development needs for the area. Policies that are clearly worded or intended to place an unjustified constraint on further sustainable development taking place would not be consistent with the requirements of the Framework or meet the Neighbourhood Plan Basic Conditions.

Communities should not seek to include policies in Neighbourhood Plans that have no planning basis or are inconsistent with national and local policy obligations. Proposals should be appropriately justified, by the findings of a supporting evidence base and must be sufficiently clear to be capable of being interpreted by applicants and decision makers. Policies and proposals should be designed to add value to policies set out in Local Plan and national guidance, as opposed to replicating their requirements.

The community should liaise with the Council's planning team to seek advice on the appropriateness of the Neighbourhood Plan's proposals.

Sustainability Appraisal/Strategic Environmental Assessment

The preparation of a Neighbourhood Plan may fall under the scope of the Environmental Assessment of Plans and Programmes Regulations 2004 (SEA Regulations) that require a Strategic Environmental Assessment (SEA) to be undertaken where a Plan's proposals would be likely to have significant environmental effects. The requirement to undertake an SEA will be dependent on a Neighbourhood Plan's proposals, but is likely to be necessary where a Plan is proposing specific allocations or site designations.

In accordance with Schedule 1 of the SEA Regulations, a Screening Assessment of a Neighbourhood Plan's proposals should be completed to assess whether an SEA must be prepared. Where an SEA is required this should be commenced at the earliest opportunity, alongside the preparation of the emerging Neighbourhood Plan, to ensure the Neighbourhood Plan's proposals have been properly considered through the SEA process, and appropriately justified

against other reasonable alternatives. Where an adequate SEA has not been undertaken a Neighbourhood Plan is unlikely to meet the Neighbourhood Plan Basic Conditions.

Although Neighbourhood Plans do not require a Sustainability Appraisal (SA) of their proposals, preparing an SA can help to show how a Neighbourhood Plan will contribute to the achievement of sustainable development, a Neighbourhood Plan Basic Condition. Where an SEA is required, extending this assessment to the preparation of an SA is unlikely to require significant additional input.

The Council's planning team will be able to advise on the likely need for an SEA of the Neighbourhood Plan's proposals. To be compatible with EU obligations, further appraisals, such as a Habitats Regulations Assessment, may also be required depending on local circumstances.

Should you require any further information about the contents of this response then please do not hesitate to contact me or one of the Gladman team.

Yours Faithfully,

Richard Agnew

Gladman Developments Ltd.

r.agnew@gladman.co.uk

